

## Introducing tablets with Google Play for Education

Designed for learning, made for the classroom



Introducing tablets with Google Play for Education. Designed for learning, made for the classroom

### The program:

To access Google Play for Education, schools can purchase this program, starting at \$259, which includes:

- Tablets
- Device management
- Support
- Google Play for Education

*"Suddenly we had access to an entire portfolio of learning exercises through Google Play for Education which had previously been unavailable to us. This was a huge opportunity for transforming the classroom learning experience."*

—Cathy Cowan, eighth grade teacher, KIPP Bridge Charter School

### Learn more

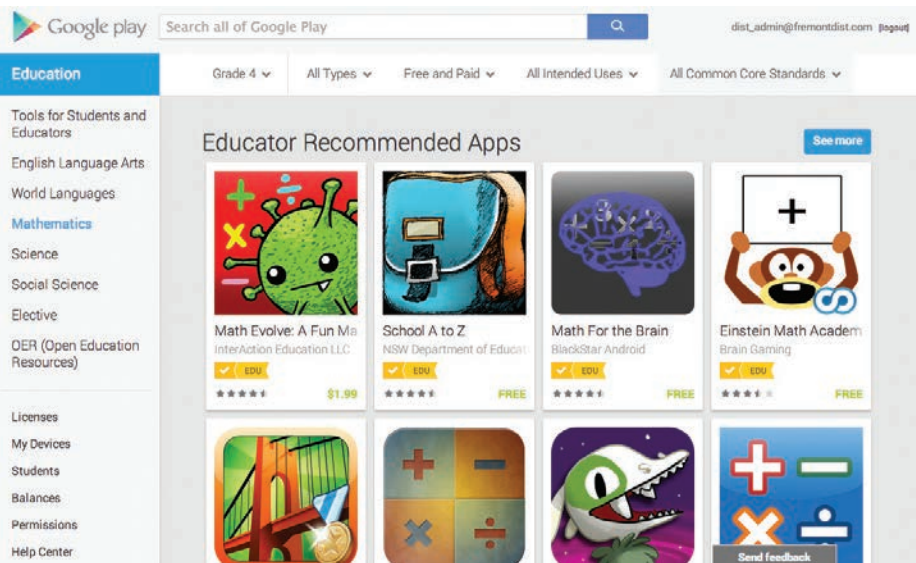
To learn more about tablets with Google Play for Education, visit [google.com/edu/tablets](https://google.com/edu/tablets).

Introducing tablets with Google Play for Education, the content destination designed just for schools using Google's classroom-ready 1:1 tablets. Tablets with Google Play for Education give teachers access to approved tools and content that help them meet the individual needs of today's students. Administrators experience easy deployment and management: set up a classroom of tablets and content in just minutes.

### Google Play for Education

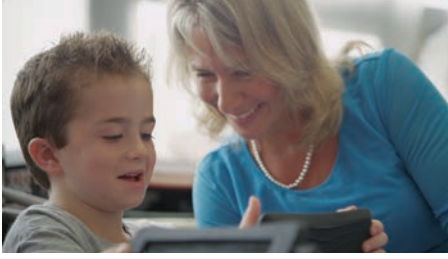
Google Play for Education contains an ever-growing set of educational apps and videos. There are two types of content, found in distinct ways.

1. **Browse for teacher-approved content.** Use the filters at the left and top of the screen to find teacher-approved apps. Educators can browse apps by grade, subject, keyword, or education standard including Common Core, and filter for apps that are free. In addition to apps, find a wide selection of videos from approved educational creators on YouTube.



Teacher view of Google Play for Education, browsing for Grade 4 Math

2. **Search over 1 million apps in Google Play.** In order to give teachers choice over the content they use, Google Play for Education also includes over 1 million apps from Google Play. To find both teacher-approved apps and those that are not, type keywords in the search bar at the top of the screen. Teacher-approved apps are marked with a yellow "EDU" badge.



*"It can be a challenge introducing new technologies mid-way through the academic year, but as Nexus 7 tablets are so quick and easy to set up, the whole process was simple and didn't give our IT team a single headache."*

*—Joel T. Handler, director of IT,  
Hillsborough Township Public Schools*

### Distributing content instantly

To send apps, select the individual student or class group for distribution. This is based on the groups set up by Administrators in Google Apps for Education. For paid apps, select a pre-loaded school PO, no credit card required. Deploy content instantly via the cloud to 4 students or 40,000 with just a few clicks. Content downloads to tablets immediately.

### Scalable 1:1 tablets

It's never been easier to set up tablets and manage them day to day. With NFC touch technology, simply tap an admin tablet to each student tablet to set up a classroom in minutes.

### Affordable tablet options

There are three tablets in this program: Nexus 7 (7 inch), HP Slate<sup>8</sup> Pro (8 inch), and ASUS Transformer Pad (10 inch). New Nexus 7 tablets can ship in 2013, while the other two tablets will be ready to ship early in 2014.

	Nexus 7	HP Slate <sup>8</sup> Pro	ASUS Transformer Pad
			
<b>Weight &amp; Dimensions<sup>1</sup></b>	290 grams; 7.02" 1920x1200 HD display (323 ppi) 114 x 200 x 8.65mm	1 lb., 8" 1600x1200 display, 8.7 (W) x 5.6 (D) x 0.4 (H) inches	520 grams; 10.1" 1280x800 HD display, 257.46 x 178.4 x 9.9mm
<b>Camera</b>	1.2M Pixel front facing, 5M Pixel rear facing	720 Pixel front facing, 8M Pixel rear facing	1.2M Pixel front facing, 2M Pixel rear facing
<b>Battery<sup>1</sup></b>	Up to 9 hours active use	Up to 10.75 hours active use	Up to 10 hours active use
<b>Processor</b>	Qualcomm Snapdragon™ S4 Pro, 1.5GHz	NVIDIA® T40 S TEGRA® 4 A15 Quad-Core Processor	Quad Core 1.6GHz
<b>Ports &amp; Connectors</b>	Micro USB, SlimPort™ enabled, 3.5mm audio	Micro USB, Micro SD	Charged via micro USB. Dock (optional for \$79) – Full size USB 2.0 Port, keyboard
<b>Wi-Fi</b>	Dual-band Wi-Fi (2.4G/5G) 802.11 a/b/g/n; NFC (Android Beam)	802.11 a/b/g/n (Miracast compatible) and NFC (Android beam)	Dual-band Wi-Fi 802.11 a/b/g/n and NFC (Android beam)
<b>Price</b>	Devices start at \$229	To be confirmed	Device MSRP \$249

### Learn more

To learn more about tablets with Google Play for Education, visit [google.com/edu/tablets](http://google.com/edu/tablets).

The webpage includes five videos that show how the program works:

- Tablet set up
- Extensive content
- Approved apps
- Easy discovery
- Group purchase

### Support

Schools can take advantage of comprehensive online, email, and telephone support. Access our [support website](#) at anytime, or if you need more help request support in your Admin console.

<sup>1</sup> Engineering specs and device options can change without prior notice. Battery times are estimates, depend on many factors, and may decline over time. Specifications are subject to change without notice.

