

ACHIEVING CONVERGENCE WITH

THE ALL-IN-ONE

I.T. INFRASTRUCTURE

What Is Converged Infrastructure?

The CI approach compiles separate technologies into a single, modular and optimized solution.



Networking



Storage



Servers

The CI Value Proposition

The Data Center Today



70%

Slice of IT budget spent on operations

80%

Orgs that say they can't scale to meet new demands

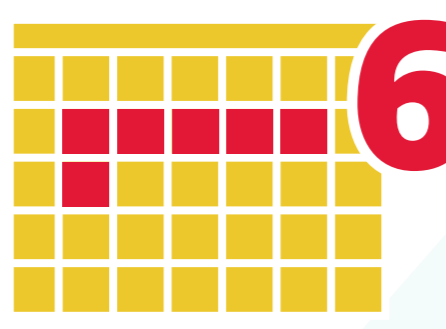
90%

Data centers not using converged infrastructure (76% expressed interest)

Speed



Number of consoles needed to monitor energy profile



Mean number of days to deploy new services (down from 20 days)



HOURS

Amount of time a major sportswear company spends provisioning new apps (down from 6 weeks)



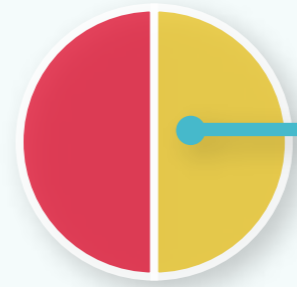
TB/HOUR

Achievable backup speeds

Savings

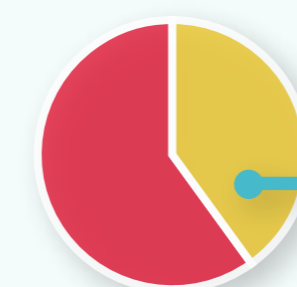
50%

Reduction in power consumption



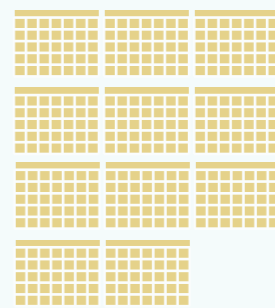
40%

Drop in costs from moving to shared storage



Time to ROI

Less than 12 Months

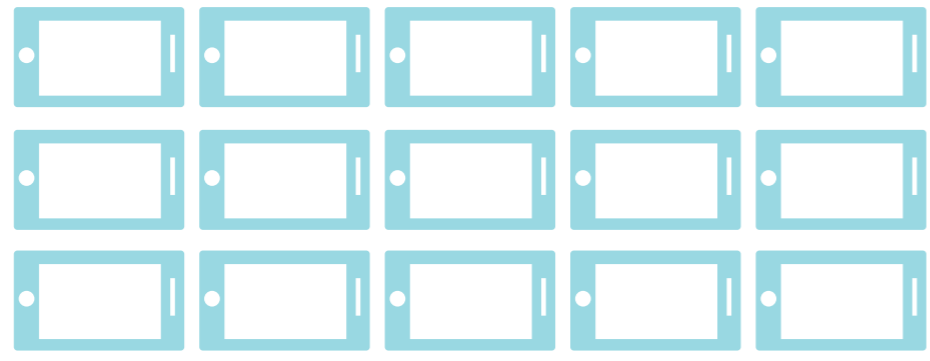


Flexibility & Scale Within Reach

The boom in mobility and cloud adoption make converged infrastructure a must-have for ease of scalability:

50 BILLION

Connected devices by 2020



80%

Decrease in backup time at SMBs using CI



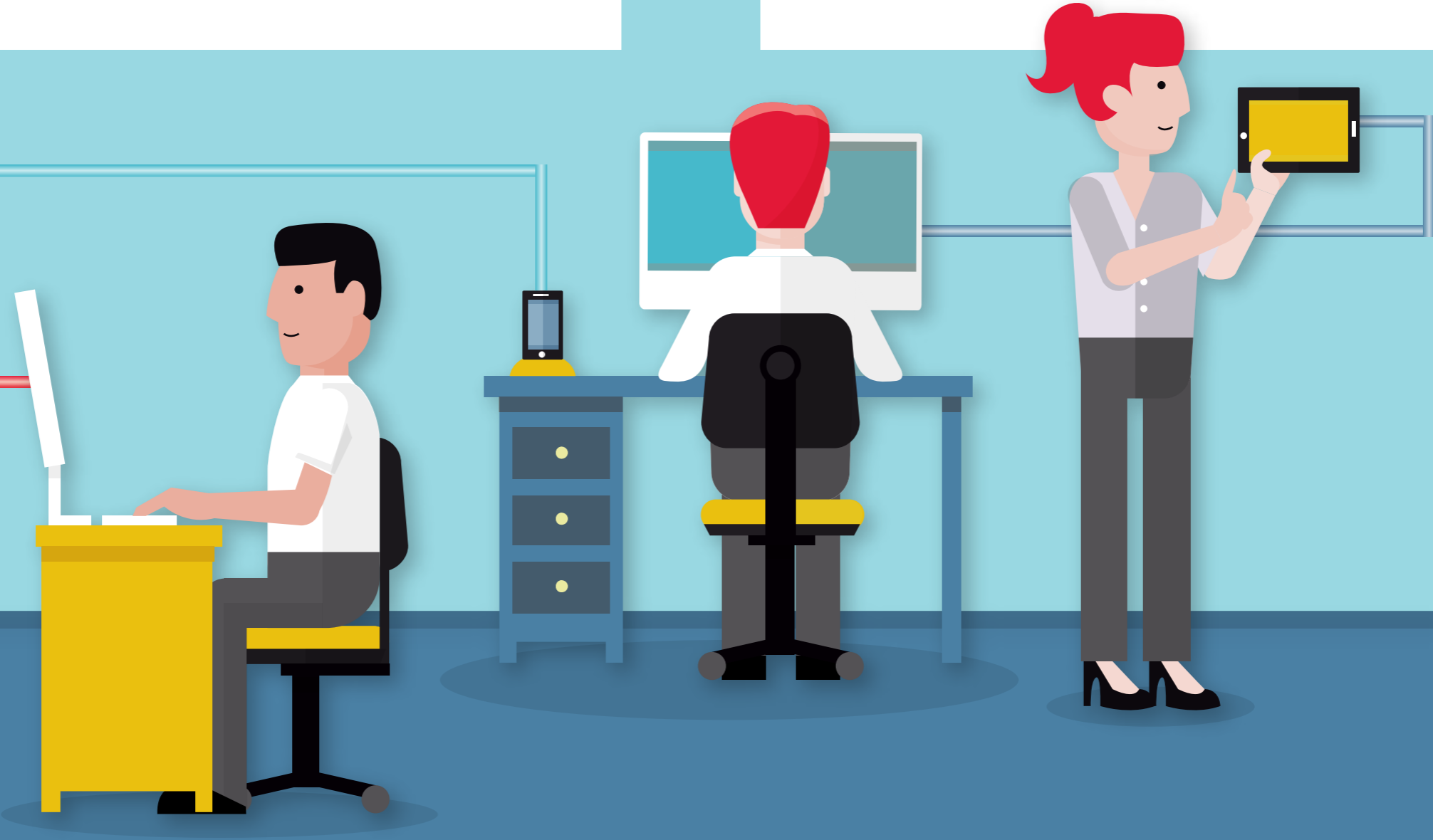
130 MILLION

Mobile cloud users by 2014



20 MINUTES

Time required to deploy servers in small-biz CI environments (down from 4 hours before CI)



Sources:

- <http://hp.sharedvue.net/sharedvue/resources/Innov-On-CI-Brochure.pdf>
- http://docs.media.bitpipe.com/io_10x/io_101427/item_473593/Measuring_the_Business_Value_of_CI_in_the_Data_Center_-_IDC-HP_White_Paper.pdf
- <http://h17007.www1.hp.com/us/en/converged-infrastructure/ci-mm.aspx>
- <http://media.netapp.com/documents/ds-3381-ExpressPod.pdf>
- <http://www.vce.com/asset/documents/mixed-workloads-usecase.pdf>
- <http://www.vce.com/asset/documents/columbia-casestudy.pdf>
- <http://www.vce.com/asset/documents/esg-stable-foundation-whitepaper.pdf>
- <http://public.dhe.ibm.com/common/ssi/ecm/en/wal12347usen/WAL12347USEN.PDF>
- http://www.ibm.com/ibm/puresystems/us/en/pf_pureflex.html#subtab:system
- http://www.ibm.com/ibm/puresystems/us/en/RTE/consolidate/con_needs1.html
- <http://www.ts.avnet.com/uk/vendors/hp/networking/awareness.html>
- <http://www.marketwire.com/press-release/cisco-netapp-expand-data-center-infrastructure-solutions-increase-market-coverage-nasdaq-ntap-1710968.htm>
- <http://h20195.www2.hp.com/v2/doctype.aspx?doctype=success+story&c=en&cc=us&keywords=%22converged%20infrastructure%22>
- <http://h17007.www1.hp.com/us/en/converged-infrastructure/ci-mm.aspx>
- <https://www.youtube.com/watch?v=IRI49ZkdN8c>
- http://www.cisco.com/web/about/ac79/docs/innov/IoT_IBSG_0411FINAL.pdf
- <http://webobjects.cdw.com/webobjects/media/pdf/CDW-Small-Biz-Mobility.pdf> "CDW's 2012 Small Business Mobility Report"
- <http://public.dhe.ibm.com/common/ssi/ecm/en/wal12349usen/WAL12349USEN.PDF>



PEOPLE WHO GET IT™

CANADA