

# HP SiteScope software

Data sheet

## HP SiteScope is agentless monitoring software that helps increase the availability and performance of your IT infrastructure.

### Improve the availability and performance of IT environments

HP SiteScope software monitors the availability and performance of distributed IT infrastructures—including servers, operating systems, network and Internet services, and applications and application components.

HP SiteScope continually monitors more than 85 types of IT infrastructure through a Web-based architecture that is lightweight and highly customizable. With HP SiteScope, you gain the real-time information you need to verify infrastructure operations, stay apprised of problems, and solve bottlenecks before they become critical. HP SiteScope is an important component of both HP Operations Center software and HP Business Availability Center software, providing agentless availability, and performance monitoring and management.

### Reduce total cost of ownership

HP SiteScope reduces your total cost of ownership (TCO) and:

- Gathers detailed performance data for IT infrastructure using agentless technology installed on your managed server or device
- Enables easy installation and monitoring of IT infrastructure—in less than one hour
- Reduces the time and cost of maintenance by consolidating all maintenance to one central server
- Reduces the time to make administrative and configuration changes by providing templates and global change capabilities
- Enables quick and efficient operations management with automated actions initiated upon monitor status change alerts

- Offers solution templates that include specialized monitors, default metrics, proactive tests, and best practices
- Supports easy customization to provide standard monitoring of previously unmanaged or hard-to-manage systems and devices

### Combining agentless and agent-based approaches

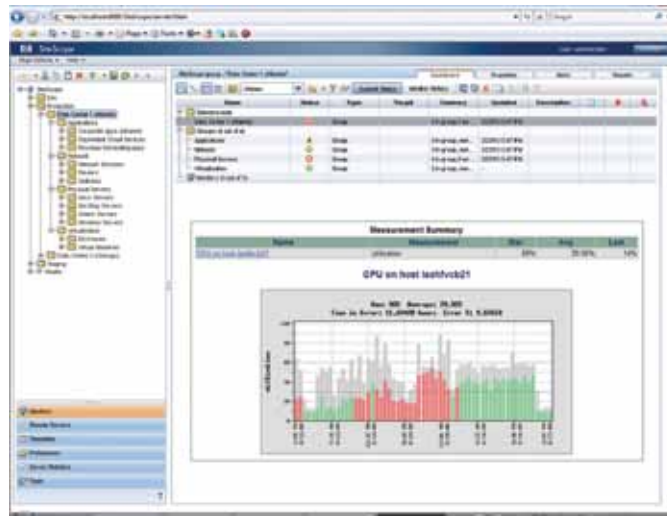
Many IT organizations look to combine agentless and agent-based infrastructure monitoring to provide the breadth and depth you need to deliver performance and availability of critical applications. HP SiteScope's agentless approach, with low-cost installation and maintenance, is complementary to HP Operations Manager software for agent-based monitoring and granular data collection. Both feed into a consolidated dashboard to improve IT efficiencies and reduce event noise. HP SiteScope can also serve as an ideal starting solution for mid-market customers who are looking for low TCO.

HP SiteScope can be deployed standalone or as part of HP Operations Center software, HP Business Availability Center software, or HP LoadRunner software implementations. As part of HP Operations Center, HP SiteScope provides agentless monitoring to complement and extend your agent-based monitoring coverage. As part of HP Business Availability Center, HP SiteScope provides key infrastructure metrics to enable you to drill down from business service or application problems to the infrastructure at fault. Lastly, HP SiteScope serves as the monitoring foundation for HP LoadRunner software to better identify bottlenecks during the load-testing phase.



### Get real-time IT information

HP SiteScope displays the real-time status of your IT environment.



## How HP SiteScope works

HP SiteScope provides a centralized, scalable architecture, is implemented as a Java™ server application and runs on a single, central system as a daemon process. The HP SiteScope Java server supports three key functions: data collection, alerting, and reporting. All user interaction is accomplished through a Web-based user interface that enables configuration, installation, administration, real-time status, and reporting from one seamlessly integrated console.

HP SiteScope enables system administrators to monitor your IT infrastructure remotely from a central installation without the need for agents on the monitored systems. HP SiteScope accomplishes remote monitoring by logging into systems as a user from its central server, which can run on Windows®, UNIX®, and Linux platforms. Several log-in formats are supported, including TELNET, rlogin, HTTP, SSH, NetBIOS, and WMI.

In addition, HP SiteScope offers optional failover support to give you added redundancy and automatic failover protection in the event an HP SiteScope server fails. When the HP SiteScope primary server becomes unavailable, a secondary server takes over, providing uninterrupted monitoring.

## Key features and benefits

- Features an agentless, enterprise-ready architecture that lowers TCO.
- Monitors more than 85 different target types for critical health and performance characteristics; enables proactive alerts with customizable thresholds before end users experience problems.
- Offers solution templates that feature built-in domain expertise in the form of specialized monitors, default metrics and thresholds, proactive tests, and best practices for a given application or monitoring component.

- Can initiate automated corrective actions such as restarting servers, clearing disk space, and executing commands.
- Generates daily, weekly, and monthly summaries of single and multiple monitor readings with built-in management server-based reports.
- Provides powerful administrative functions, such as global search and replace, copy/paste, and filter views.
- Provides a highly customizable, Web-based user interface that supports role-based views and displays favorites.
- Serves as an integrated component of HP Operations Center and the monitoring foundation for HP Business Availability Center and HP LoadRunner.
- Monitors Windows, UNIX, and Linux systems, offering comprehensive coverage for the most heterogeneous environments.
- Includes flexible notification methods, including standard methods—email, SNMP trap, and pager (including support for SMS devices)—and additional methods, such as HTTP post and database alerts. In addition, it has the ability to escalate an alert according to rules defined by the user.
- Delivers a combined agentless and agent-based monitoring solution with HP Operations Manager.
- Rapidly updates monitoring and deployment across the entire enterprise using templates and a “Publish Changes” feature. You can also easily mass-deploy templates using values in CSV files.
- Reduces false alerts, customizes allowable deviations, and establishes separate thresholds to address usage based on demand or the time of day using baseline management.
- Monitors virtual environments including all VMware, MS Hyper-V, and Sun Solaris Zones. Integration with Amazon CloudWatch service allows you to monitor EC2 machine instances and Elastic Load Balancers.

# Supported IT targets for monitoring

HP SiteScope can monitor the following targets:

<b>Operating systems</b>	AIX HP NonStop HP-UX Linux MAC OS X (most versions, SSH compatibility required)	Microsoft® Windows SCO OpenServer SGI IRIX Sun Solaris Tru64	
<b>System monitors</b>	Composite CPU utilization Database DHCP Directory Disk space File HP NonStop resources	HP NonStop Event Log IPMI LDAP Log file Memory Network News Radius	Script Service UNIX resources Windows dial-up Windows Event Log Windows Performance Counter Windows resources Windows services state
<b>Cloud and virtualization monitors</b>	Amazon CloudWatch Microsoft Hyper-V Solaris Zones VMware ESX Server VMware ESXi VMware Virtual Center VMware vSphere		
<b>Application monitors</b>	Apache Web Server BroadVision Application Server Check Point FireWall-1 Cisco Works Citrix XenApp COM+* F5 Big-IP Generic Database using JDBC queries IBM DB2 IBM WebSphere Application Server IBM WebSphere Performance Servlet IBM WebSphere MQ Server* JBoss Application Server	JMX metrics Macromedia ColdFusion Server MAPI Microsoft ASP Server Microsoft Exchange Microsoft IIS Microsoft SQL Server Microsoft Windows 64-bit Editions Oracle Application Server Oracle BEA Tuxedo Oracle BEA WebLogic Application Server Oracle Siebel Application Server* Oracle Siebel Log*	Oracle Siebel Web Server* Oracle Database Real One/Real Media Player and Server SAP CCMS* SAP Java Application Server* SAP Performance* SAP Work Processes* Sun One server Sybase database UDDI Server Windows Media Player and Server Windows resources XML metrics
<b>Web/URL monitors</b>	eBusiness Chain Link check URL URL content	URL list URL sequence Web server Web service	Web Script*
<b>Network service monitors</b>	DNS Formula composite FTP Mail Network bandwidth Ping	Port Real streaming SNMP by MIB SNMP SNMP trap	
<b>Solution templates*</b>	HP Quality Center HP Service Manager IBM WebSphere Application Server JBoss Application Server Microsoft .NET Microsoft Active Directory Microsoft Exchange Microsoft IIS Microsoft SQL Server Operating Systems--Windows Host and Unix Host (AIX, Linux, Solaris) Oracle BEA WebLogic Application Server Oracle Database Oracle Siebel SAP Java SAP R/3		

\* Requires an additional license

## Supported platforms for the HP SiteScope server

- Hardware: Intel x86 and Sun SPARC
- Operating systems: Microsoft Windows (32/64 bit versions), Microsoft Windows 2003 Server/Enterprise Server SP1 or higher, Microsoft Windows 2008 R2, Microsoft Hyper-V 2008 R2, Microsoft Windows 2008 Server; Solaris9, 10 (SPARC); Red Hat Linux ES/AS 3, 4, 5
- Virtual machines: VMware ESX Server 3.0 and higher, VMware Virtual Center 2.x and higher
- Memory: 512 MB minimum (2 GB+ recommended)
- Free hard disk space: 2 GB or more (10 GB+ recommended)

## A complete solution

### Comprehensive training

HP provides a comprehensive curriculum of HP software courses. These offerings provide the training you need to realize the full potential of your HP solutions, increase your network optimization and responsiveness, and achieve better return on your IT investments.

With more than 30 years experience meeting complex education challenges worldwide, HP knows training. This experience, coupled with unique insights into HP software products, positions HP to deliver the optimum training experience. For more information about these and other educational courses, visit

[www.hp.com/learn](http://www.hp.com/learn)

### HP Financial Services

HP Financial Services provides innovative financing and financial asset management programs to help you cost-effectively acquire, manage, and ultimately retire your HP solutions. For more information on these services, visit [www.hp.com/go/hpfinancialservices](http://www.hp.com/go/hpfinancialservices)

## HP Services

HP provides high-quality software services that address all aspects of your software application lifecycle needs. With HP, you have access to standards-based, modular, multi-platform software coupled with global services and support. The wide range of HP service offerings—from online self-solve support to proactive mission-critical services—enables you to choose the service that best match your business needs.

For an overview of HP software services, visit [www.managementsoftware.hp.com/service](http://www.managementsoftware.hp.com/service)

To access technical interactive support, visit Software Support Online at [www.hp.com/managementsoftware/services](http://www.hp.com/managementsoftware/services)

To learn more about HP Software Customer Connection, a one-stop information and learning portal for software products and services, visit [www.hp.com/go/swcustomerconnection](http://www.hp.com/go/swcustomerconnection)

HP SiteScope software improves the availability and performance of your IT infrastructure. To learn more about HP SiteScope please visit [www.hp.com/go/sitescope](http://www.hp.com/go/sitescope)

Share with colleagues



### Get connected

[www.hp.com/go/getconnected](http://www.hp.com/go/getconnected)

Current HP driver, support, and security alerts delivered directly to your desktop

© Copyright 2007–2010 Hewlett-Packard Development Company, L.P. The information contained herein is subject to change without notice. The only warranties for HP products and services are set forth in the express warranty statements accompanying such products and services. Nothing herein should be construed as constituting an additional warranty. HP shall not be liable for technical or editorial errors or omissions contained herein.

Java is a US trademark of Sun Microsystems, Inc.

Microsoft and Windows are U.S. registered trademarks of Microsoft Corporation.

UNIX is a registered trademark of The Open Group.

Oracle is a registered trademark of Oracle Corporation and/or its affiliates.

4AA1-6157ENW, Created October 2007; Updated June 2010, Rev. 4

