



Scalable Data Management Options for VMware Environments with CommVault® Simpana® 9 Software

Simpana 9 Software Highlights:
Simpana software extends the industry leading backup and disaster recovery capabilities from CommVault with:

1. **SnapProtect™ for Virtual Server Agents** – protect hundreds of virtual machines in minutes with policy-based HW snapshots. Dramatically improve RPO and RTO capabilities.
2. **Massive Scalability** – optimized to support thousands of Virtual Machines.
3. **Integrated Deduplication** – reduce network transfer by up to 90% and backup windows by 50% using source-side deduplication.
4. **Enhanced Autodiscovery of Virtual Machines** – automatically discover and assign new VMs to data management policies for minimal management.
5. **Integrated SRM Capability** – optimize storage resource utilization with rich set of analysis, trending and reporting tools.
6. **Heterogeneous Storage Support** -Supports a wide variety of storage systems for snapshots.
7. **Expanded Virtual Server Support** – Now supports Virtual server environments running VMWare, Microsoft or Citrix Xen.

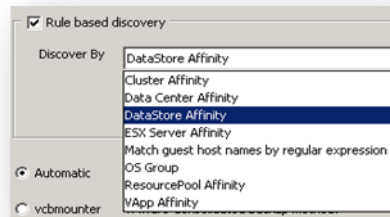
CommVault® Simpana® 9 software's Virtual Server Agent (VSA) is the industry leader in meeting the unique challenges of protecting a virtual environment. Simpana 9 software scales seamlessly to support the most demanding enterprise deployments running VMware deployments.

Protect Hundreds of Virtual Machines in Minutes with Minimal Server Impact

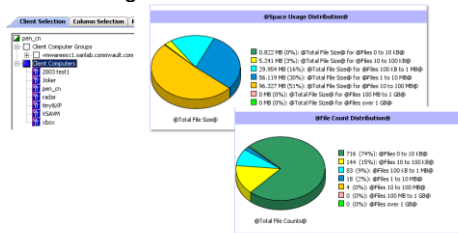
- SnapProtect™ for VSA seamlessly integrates with storage snapshots to protect hundreds of VMs in minutes, bypassing server resources.
- Create secondary copies for DR on tiered disk or tape leveraging VMWare vStorage API for Data Protection (VADP).
- Embedded deduplication reduces network traffic by up to 90% and the full backup window by almost 50%.
- Built in resiliency and concurrency control for high scalability.
- Seamlessly scale to support environments with thousands of Virtual Machines.
- Application integrated protection ensures application consistent backups within VMs.

Simplified Management and Actionable Reporting

- Auto-Discovery affords automated data protection for new VMs based on pre-defined policies with no administrative intervention. Catch-All management policy ensures no VMs are left unprotected.



- Integrated Storage Resource Management (SRM) capability to present a 360 degree view of the physical and virtual environment, no agents required.
- Actionable reports, including capability to automatically archive contents inside VMs based on SRM reports.
- Manage the environment, not the licenses with simplified capacity based licensing, which includes unlimited agents.



Mission-Critical Recovery and Retention Options

- Single pass backup provides full VM recovery or granular recovery capabilities by using VSA agents to index data inside VMs.
- SnapProtect™ for VSA allows multiple recovery points throughout the day. Recover to a few hours ago, not to last night's backup.
- Accelerate application-level Exchange restores with individual mailbox or message level restores from an offline point in time VM snapshot.
- Information mining allows selective extraction of individual objects from Exchange and SharePoint database files for object level recovery and long term retention.
- Integrated disaster recovery of virtual machines leveraging DASH Copy capability for offsite retention



Key Capabilities and Benefits

Capabilities	Benefits
SnapProtect™ for Virtual Servers	Protect 100's of Virtual Machines (VMs) in minutes. Create rapid fire, policy-based persistent HW snapshots that deliver near instant recovery of virtual machines.
Integrated Deduplication	Reduce backup windows and eliminate redundant backup data sets with CommVault's industry leading deduplication technology. CommVault's deduplication is a source-side, global deduplication technology for maximum performance and ease of manageability.
Enhanced Auto Discovery and Protection of Virtual Machines	Manage VM sprawl, minimize administrator intervention and guarantee automatic protection for all VMs in the environment. The VSA agent automatically detects and protects all new VMs based on pre-defined policies.
Multiple Backup and Recovery Options based on Defined Policies	More Recovery points per day. Allow Full VM restore or granular file level recovery.
Granular File-Level Recovery from a Full Image Backup	Easy, fast recovery of file system, database and application data using a single data object.
Integrated Virtual Machine DR	Perform integrated VM recoveries by leveraging DASH Copy capability for offsite backups of virtual machines
Industry Leading Storage Vendor Support	Support for industry leading storage platforms provides a consistent data management across different storage vendors, allowing flexibility in the choice of storage systems including: Storage Arrays from EMC (CLARiiON, Symmetrix, Celerra), NetApp, IBM (XIV, DS Arrays), Dell, HP, HDS Storage Interconnects including: FC, iSCSI, NFS
Broad VMware Support Options	vSphere 3.5 vSphere 4.0, 4.1
Broad Virtual Server Platform Support	Support for industry leading Virtual Server environments including: VMWare vSphere and ESX Server Microsoft HyperV Server Citrix Xen Server



www.cdw.com/commvault • 800.800.4239 • e-mail: cdwsales@web.cdw.com
CDW Worldwide Headquarters • 200 N. Milwaukee Ave. • Vernon Hills, IL 60061

www.commvault.com • 888.746.3849 • E-mail: info@commvault.com
CommVault Worldwide Headquarters • 2 Crescent Place • Oceanport, NJ 07757 • 888-746-3849 • Fax: 732-870-4525
CommVault Regional Offices: United States • Europe • Middle East & Africa • Asia-Pacific • Latin America & Caribbean • Canada • India • Oceania