

NETWORKING SERVICES

SOFTWARE DEFINED DATA CENTRE PROOF OF CONCEPT (PoC)

Server virtualization alone may not be enough to optimize data centre performance. As demands continue to increase, you should consider a software-defined data centre (SDDC), which virtualizes server, storage and network assets together. At CDW Canada, we can help you map out a unified plan to maximize your data centre performance.

Why Perform a PoC?

- **Validate Micro-Segmentation for VM security with NSX**
 - Control traffic between groups within a network
 - Secure traffic based on logical grouping – rather than physical topology
 - Create network segment flexibility – even between systems on the same VLAN
 - Advanced services insertion – dynamic actions respond to changing security conditions
- **Validate Data Centre Extension with NSX**
 - Extend L2 East-West segments using existing DCI
 - Egress localization and ingress optimization
 - VXLAN to VXLAN connectivity
 - VXLAN to VLAN connectivity
 - L2VPN Server and standalone client
- **Validate NSX Routing**
 - 1 tier of routing
 - Distributed routing for east-west traffic
 - Designated interface for north-south traffic
 - Dynamic routing to advertise logical networks – OSPF/BGP
 - 2 tiers of routing
 - Distributed routing for east-west traffic
 - Perimeter gateway for north-south traffic
 - Dynamic routing to advertise logical networks – OSPF/BGP



POC Requirements

Hardware

- A minimum of 1 physical server for management & Edge Cluster that meets the following spec:
 - 2Ghz or greater CPUs
 - 32 GB or RAM or greater
- A minimum of 2 physical servers for compute clusters that meet the following spec:
 - 2Ghz or greater CPUs
 - 16GB or RAM per server
- 300 GB of shared storage for management VMs
- 200GB or greater of shared storage for customer workload VMs

Network

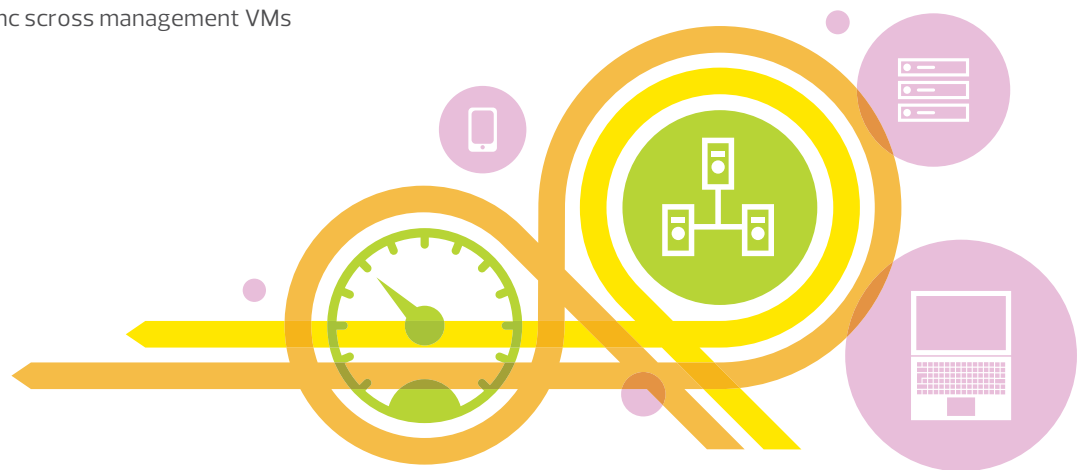
- VLANs for
 - ESXi Server & VMManagement
 - vMotion & IP Storage
 - VXLAN Transport
 - Routed Datacentre networks used for workloads in PoC
- IP address details for all networks used on the NSX PoC
- NTu of 1600 or greater on VXLAN transport networks
- Forward and reverse DNS resolution for all VMs
- NTP service for time sync across management VMs

Software

- vSphere 5.5 or higher
 - vSphere licenses (alternatively 60 day evaluations can be used during a PoC)
 - vCenter Server 5.5.0 U2
 - vCenter Server Appliance 5.5.0 U2

Deliverables

- Prepare physical environment for NSX
- Build vSphere environment
- Provide PoC documentation
 - Include 1 customer use case/test plan
 - Customer can modify use case with limited scope



To learn more about Networking Services, contact your CDW Canada account team or visit CDW.ca/networking

