

ThinkPad, ThinkCentre, and Lenovo 3000

OPTIONS COMPATIBILITY MATRIX

And

Customer-for-Life Selling Guide



What's Inside

Customer-for-Life (CFL) Selling	pg. 2-3	ThinkCentre Desktops	
Think vs. Lenovo 3000	pg. 4	OCM ThinkCentres	pg. 19
Lenovo 3000 Notebooks	pg. 5	OCM ThinkCentre Footnotes	pg. 20
C100/N100/V100		Other Lenovo SS&P Products	Pg. 21
OCM 3000 Notebooks	pg. 6-7	New! Headset	pg. 22
Lenovo 3000 Desktops	pg. 8	Docking	pg 23-24
J100/J05		Projectors	pg. 25
OCM 3000 Desktops	pg. 9	Monitors	pg. 26
ThinkPad Notebooks		Carrying Cases	pg. 27
ThinkPad Z61	Pg. 10	Keyboards	pg. 28
ThinkPad R60	pg. 11	Mice	pg. 29
ThinkPad T60	pg. 12	Services	pg. 30
ThinkPad X60	pg.13	ThinkVantage Technologies	pg. 31
ThinkPad X41 Tablet	pg. 14	Legal Footnotes	pg. 31
OCM ThinkPads	pg. 15-17		
OCM ThinkPad Footnotes	pg. 18		

September 2006

Phase I: from System Purchase through first 90 days

Highest Close Rates...these **Lenovo Accessories** virtually sell themselves.

Ask for the Order...or Lose it!



#3 – Stay **WIRELESS LONGER!**
Stay unplugged longer with a spare ThinkPad battery.



#4 –**POWER**. WHEN you need it, WHERE you need it!
Leave this sleek AC/DC Combo adapter in your carrying case and never be caught without power again! Great on planes, in cars, and in your hotel room



#1 – **WORK FASTER**
Double your memory(!) and boost Overall system performance.

Perfect for multi-tasking, quick start-up, Tested and guaranteed to work with Lenovo systems.



#2 –**PROTECT** your Investment
With professional Carrying Cases that protect your ThinkPad and also make you look like a million bucks!

External Battery Charger

Sell when 2nd battery is sold

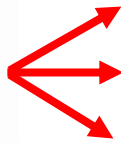


Just need an extra adapter for home? Get an affordable and convenient ThinkPad AC Adapter



Phase II: 3-6 months after Initial Purchase

Need for Desktop Enhancement or Cable Management...Sell Docking Solutions with these **Lenovo Accessories** - Easy as **1-2-3!**



Advanced Dock



Mini Dock



Essential Port Replicator



Don't forget to sell one Of many **Ultrabay Storage Devices** to complete the sale

Add Options...



#1 - Full-Size Mouse and Keyboard
Great for Ergonomics!



#2- Flat-Panel Monitor



#3 - **ADD POWER**: Essential Port Replicator does not come with a Power Adapter - Easy sale



Elevate Your Style: The ergonomic ThinkPad Adjustable Notebook Stand lifts your display up to a comfortable eye level

Phase III: 6-24 months after Initial Purchase

Need for Backup or Additional Storage...Sell **One** or **More**
USB or Ultrabay Devices...

Upgrade your Hard Drive Capacity and Backup Capability



ThinkPad with
Ultrabay Slot

**Upgrade your
ThinkPad Hard Drive
Capacity and Speed
with a new Hard Drive**
Up to 100GB 7200



**Add a high speed
high capacity USB
Hard Drive up to 80GB
5400RPM**



**Add a 2nd Hard Drive
with a T40 series or T60
series Hard Drive Bay
Adapter**



**Make easy Backups
with an Ultrabay
Multiburner (DVD
Burner) or External
USB Multiburner
(Use Rescue and
Recovery for backups)**

Phase IV: from Initial Purchase and Beyond

These **Lenovo Accessories** can be sold at **Any Time**. The More Often
You Try...**the More You'll Sell!**



Lenovo Projectors

Impress your audience both at work or on the road with feature-rich functions like our exclusive Enhanced Auto-Sensing.

Available in Standard, Conference Room, Ultra-Portable and Wireless models.

Input Devices

The typical End-User will replace their mouse and keyboard an average of 2 times over the life of their system.

It's Time to Upgrade to Optical, Wireless or Fingerprint Reader versions.



...and More!!



Power-Up!

Hundreds of thousands of ThinkPad users have batteries that are over a year old and are dead or dying...

It's Time to Replace and RECHARGE!

Visuals & Monitor Accessories

BIGGER is BETTER!
Thin is In!

Plus...with our TFT Radial Arms & Wireless Input Devices End-Users can get increased Workspace.



Which Lenovo brand best fits my customer's needs ?

Our brand attributes can help you choose from the newly expanded Lenovo PC product line



For large & Medium Businesses that require traditional MIS tools. TopSeller Models for Small Business customers.

For professionals who desire an affordable, easy-to-use, reliable computing experience.

	THINK	Lenovo 3000
Technology (Platform, Chipset, Processor)	Industry - Leading	Industry - Standard
Product Configuration	Custom/Configure-to-order (CTO)	Standard/Build-to-stock (BTS)
Platform Stability	Global Workhorse Models	Frequently Updated
Value	Full Suite of Robust Features	Attractive Price Points
Design	Classic	Exciting, Contemporary
Security	Most Secure PCs Available (select models)	Simple but Secure
Business Partner Offerings	Complete End-to-End Solutions	Basic Products and Services
IT Management	Centrally Managed	Local Managed

Lenovo 3000 Notebooks...Worry-free computing and great value

- **Great Value**
 - Attractive pricing for a range of technology that meets customer needs
 - Competitive entry price points for first time buyers
 - Lenovo world-class engineering delivers high quality, reliable notebook PCs (Makers of the award-winning ThinkPad)
 - 1-year limited warranty with the option to increase to 3 years
- **Lenovo Care tools**
 - **One-Button System Recovery** helps PCs recover from viruses at the touch of a button
 - **Simple Network Connectivity** and management enables users to get connected easier
 - **Performance Restoration** helps keep your PC running as good as new
 - **Automatic updates** from Lenovo deliver continual updates that keep your PC up to date
- **Highlighted systems:**

C100
15"
Regular



Entry & Mainstream notebooks with exceptional value

N100
14.1" Wide &
15.4" Wide



Stylish Widescreen notebooks combining popular features at a great price

V100
12" Wide



Sleek Widescreen Ultraportable combines great performance with exceptional features

- Pentium M, Celeron M Processors
- DDR2 533MHz memory
- Intel 915 GM Chipset
- Intel GMA 900 Integrated Graphics w/ 128MB VRAM
- Hard Drives up to 100GB 5400 rpm

- 4-in-1 Multi-card Reader
- 4 USB ports, 1394 and S-Video
- Stereo speakers and integrated microphone
- Multimedia centre eases management of photos and music

- Latest Intel-based platforms
- 802.11 a/b/g wireless on all models
- DVD Recordable or CD/DVD Combo Optical
- VibrantView Display
- Integrated Camera (select models)
- Optional Bluetooth, Fingerprint, Cameras
- Dual integrated stereo microphones
- Multicard Readers, 1394

Lenovo 3000 Notebooks

Description	Part Number	C100 15" 0761			N100 14" 0689			N100 15" 0768		
Memory										
SO DIMM/SDRAM										
256MB PC2-5300 CL5 Non-Parity DDR2 SDRAM SODIMM	40Y7732	x	x	x						
512MB PC2-5300 CL5 Non-Parity DDR2 SDRAM SODIMM	40Y7733	x	x	x						
1GB PC2-5300 CL5 Non-Parity DDR2 SDRAM SODIMM	40Y7734	x	x	x						
256MB PC2-4200 CL4 Non-Parity DDR2 SDRAM SODIMM	73P3840	x								
512MB PC2-4200 CL4 Non-Parity DDR2 SDRAM SODIMM	73P3842	x								
1GB PC2-4200 CL4 Non-Parity DDR2 SDRAM SODIMM	73P3844	x								
Storage										
CD-ROM Drives										
ThinkPlus USB 2.0 CD-RW/DVD-ROM Combo II Drive	40Y8637	x	x	x						
Lenovo USB 2.0 Super Multi-Burner Drive (DVD Burner)	40Y8638	x	x	x						
Diskette Drives										
USB Portable Diskette Drive	05K9276	x	x	x						
Hard Disk Drives/Non Hot Swap										
Portable 40GB USB 2.0 Hard Drive with Rescue and Recovery	22P7196	x	x	x						
Portable 80GB USB 2.0 Hard Drive with Rescue and Recovery v3	40Y8726	x	x	x						
Lenovo 3000 N100 60GB Serial ATA Hard Drive (5400rpm)	41N3025		x	x						
Lenovo 3000 N100 100GB Serial ATA Hard Drive (5400rpm)	41N3026		x	x						
ThinkPad Docking Solutions										
Docking - Universal Port Replicators										
Lenovo USB Port Replicator with Video	40Y8132	x	x	x						
Multimedia										
Other										
Lenovo USB/Analog Headset by Sennheiser	40Y8518	x	x	x						
Security Solutions										
Physical Protection										
Kensington MicroSaver 64068E Security Cable Lock from Lenovo	73P2582	x	x	x						
Smart Card Solutions										
Gemplus GemPC Smart Card Reader from Lenovo	41N3004	x	x	x						
Gemplus GemPC USB Smart Card Reader from Lenovo	41N3040	x	x	x						
Power										
AC Adapters										
ThinkPad and Lenovo 90W AC Adapter	40Y7659	x	x	x						
ThinkPad and Lenovo 90W AC/DC Combo Adapter	40Y7630	x	x	x						
ThinkPad and Lenovo 65W AC Adapter	40Y7696	x	x	x						
Batteries										
Lenovo C100 Series 8 Cell Lithium-Ion Battery	40Y8313	x								
Lenovo N100 Series 6 Cell Lithium-Ion Battery	40Y8315		x	x						
Lenovo N100 Series 9 Cell Lithium-Ion Battery	40Y8317		x	x						
Accessories										
Carrying Cases										
Lenovo Messenger Carrying Case	40Y8598	x	x	x						
Lenovo Top Loader Carrying Case	40Y8601	x	x	x						
Lenovo Backpack Carrying Case	40Y8603	x	x	x						
ThinkPad Expander Carrying Case	73P3597		x							
ThinkPad BackPack Carrying Case	73P3599		x	x						
ThinkPad Leather Attache Carrying Case	73P3600		x							
Keyboards										
USB Keyboard with UltraNav	31P9850	x	x	x						
USB Travel Keyboard with UltraNav	31P9490	2	2	2						
USB 17-Key Business Black Numeric Keypad	33L3225	x	x	x						
Business Black Enhanced Performance USB Keyboard	73P2620	3	3	3						
Business Black Enhanced Performance Wireless Keyboard and Optical Mouse	73P4067	2	2	2						
Business Black Preferred Pro USB Keyboard	31P7415	x	x	x						
Pointing Devices										
USB Optical Wheel Mouse	06P4069	x	x	x						
Optical 3-Button ScrollPoint Mouse (800dpi) PS/2 & USB	31P7405	x	x	x						
Optical 3-Button Travel Wheel Mouse (800dpi) PS/2 & USB	31P7410	x	x	x						
Optical 3-Button ScrollPoint Pro Mouse (800dpi) PS/2 & USB	31P8700	x	x	x						
TrackPoint Cap Collection	73P2698	x	x	x						



Lenovo USB Port Replicator with Video



Backpack



Messenger Case



Top Loader Case

OCM Lenovo 3000 Notebooks

Description	Part Number			
		C100 15" 0761	N100 14" 0689	N100 15" 0768
Memory Keys				
Lenovo USB 2.0 Memory Key - 1GB	40Y7421	2	x	x
Lenovo USB 2.0 Essential Memory Key - 256MB	40Y8587	2	x	x
Lenovo USB 2.0 Essential Memory Key - 512MB	40Y8590	2	x	x
Lenovo USB 2.0 Memory Key - 256MB	40Y8594	2	x	x
Lenovo USB 2.0 Memory Key - 512MB	40Y8596	2	x	x
Other				
ThinkVision TFT Radial Arm	19K4464	x	x	x
USB Serial Parallel Adapter	22P5298	x	x	x
ThinkPad Convertible Monitor Stand	40Y7620	x	x	x
ThinkPad Adjustable Notebook Stand	40Y7676	x	x	x
Projectors & Lamps				
Lamp for iLV300 (0038A03) Projector	31P9870	4	4	4
Lamp for iLC300 (0039A03) Projector	31P9910	5	5	5
Lamp for iLM300 (0037A03) Projector	33L3537	6	6	6
C400 Wireless Projector	0039WA2	x	x	x
Lamp for Lenovo M500 (0037A05) Projector	40Y7872	7	7	7
Lenovo M500 Projector	0037A05	x	x	x
Lamp for E400 (0038A04) Projector	73P2775	8	8	8
Lamp for M400 (0037A04) Projector	73P2790	9	9	9
Lamp for C400 (0039A04) Projector	73P3191	10	10	10
C400 Projector	0039A04	x	x	x
Lamp for ThinkVision E500 (0038A05) Projector	73P4954	11	11	11
E500 Projector	0038A05	x	x	x



Lenovo Essential Memory Key
- 512MB



Projectors

OCM Footnotes

1. Compatible with L151, L151p, L171, L171p, L192p and L201p model Flat Panel Monitors.
2. Supported on Windows 2000 and Windows XP only.
3. Supported on Window 2000 and Windows XP only.

The USB output ports do not support certain High Speed USB 2.0 devices such as cameras and memory keys.

4. To be used in the iLV300 Value Data/Video Projector (M/T 0038A03)
5. To be used in the iLC300 Conference Room Data/Video Projector (M/T 0039A03)
6. To be used in the iLM300 MicroPortable Data/Video Projector 0037-A03.
7. To be used in the M500 Projector.
8. To be used in the E400 Projector
9. To be used in the M400 Projector.
10. To be used in the C400 Projector.
11. To be used in the E500 Projector.

Lenovo 3000 Desktops...Stylish Solutions at Competitive Prices

Lenovo 3000 Desktops are designed for professionals who want an affordable, easy-to-use, worry-free and reliable desktop computing experience, combining the best essential features with the latest technology

- **Highlighted Systems**

- J100
- J105



- **Choice of Processors**



J100 Models with SiS 661FX Core Chipset:

- Pentium 4 processor with Hyper-Threading technology – 3.20GHz, 800MHz FSB, 250GB HDD, 2MB L2 Cache; or
- Celeron D processor - 3.06GHz, 533MHz FSB, 160GB HDD, 2MB L2 Cache

J105 Models with Via K8M800 Core Chipset:

- AMD Sempron 2.00GHz, 333MHz FSB, 160GB HDD

- **Choice of Operating Systems**

- Microsoft Windows XP Professional
- Microsoft Windows XP Home
- DOS Licence

- **Choice of Chassis Size**

- Small Desktop
- Tower
- (Monitor not included unless bundled)



Worry-free Computing with Lenovo Care Productivity Centre

- these preloaded tools include the following useful features

- **Performance Restoration:** Keep your system running at peak performance
- **One-Button System Recovery:** Helps PCs recover from a virus at the click of a button
- **Automatic Updates from Lenovo:** A PC that updates itself

Lenovo 3000 – J105 Tower
5 out of 6 Stars !
PC Pro Magazine
May 2006



OCM Lenovo 3000 Desktops

Description

Part Number

J100 82-53183-4184/84/84/85
J105 82-58159 8-9-59

Description	Part Number		
Memory			
DIMM/SDRAM			
1GB PC3200 CL3 Non-Parity DDR SDRAM UDIMM	22P9272	x	x
256MB PC3200 CL2.5 Non-Parity DDR SDRAM UDIMM	73P2685	x	x
512MB PC3200 CL2.5 Non-Parity DDR SDRAM UDIMM	73P2686	x	x
Storage			
CD-ROM Drives			
ThinkCentre 48X-20X Internal IDE CD-ROM Drive (Black)	10K3782	x	x
ThinkCentre 16X Max RAM-Read DVD-ROM Black Drive	22P6950	x	x
ThinkCentre 48x/32x/48x Max CD-RW Drive	22P7042	x	x
ThinkPlus USB 2.0 CD-RW/DVD-ROM Combo II Drive	40Y8637	x	x
Lenovo USB 2.0 Super Multi-Burner Drive	40Y8638	x	x
ThinkCentre 48x/32x/48x/16x Max CD-RW/DVD-ROM Combination Drive	73P3300	x	x
ThinkCentre Multi-Burner Plus Drive	73P3370	x	x
Diskette Drives			
USB Portable Diskette Drive	05K9276	x	x
Hard Disk Drives/Non Hot Swap			
ThinkCentre 80GB Serial ATA Hard Disk Drive	09N4253	x	x
ThinkCentre 160GB Serial ATA Hard Disk Drive	09N4254	x	x
ThinkCentre 40GB Serial ATA Hard Disk Drive	22P7185	x	x
Portable 40GB USB 2.0 Hard Drive with Rescue and Recovery	22P7196	x	x
Portable 80GB USB 2.0 Hard Drive with Rescue and Recovery v3	40Y8726	x	x
ThinkCentre 250GB Serial ATA Hard Disk Drive	41N3015	x	x
Multimedia			
Other			
Lenovo USB/Analog Headset by Sennheiser	40Y8518	2	2
Security Solutions			
Smart Card Solutions			
Gemplus GemPC USB Smart Card Reader from Lenovo	41N3040	x	x
Accessories			
Keyboards			
Business Black Preferred Pro Full-size PS/2 Keyboard	31P7415	x	x
USB Keyboard with UltraNav	31P8950	x	x
USB Travel Keyboard with UltraNav	31P9490	3	3
Business Black Enhanced Performance USB Keyboard	73P2620	4	4
Business Black Preferred Pro USB Fingerprint Keyboard	73P4730	5	5
Business Black Enhanced Performance Wireless Keyboard and Optical Mouse	73P4067	3	3
Business Black Preferred Pro USB Keyboard	73P5220	x	x
Pointing Devices			
USB Optical Wheel Mouse	06P4069	x	x
Optical 3-Button ScrollPoint Mouse (800dpi) PS/2 & USB	31P7405	x	x
Optical 3-Button Travel Wheel Mouse (800dpi) PS/2 & USB	31P7410	x	x
Optical 3-Button ScrollPoint Pro Mouse (800dpi) PS/2 & USB	31P8700	x	x
Memory Keys			
Lenovo USB 2.0 Memory Key - 1GB	40Y7421	x	x
Lenovo USB 2.0 Essential Memory Key - 256MB	40Y8587	x	x
Lenovo USB 2.0 Essential Memory Key - 512MB	40Y8590	x	x
Lenovo USB 2.0 Memory Key - 256MB	40Y8594	x	x
Lenovo USB 2.0 Memory Key - 512MB	40Y8596	x	x
Other			
ThinkVision TFT Radial Arm	19K4464	6	6
USB Serial Parallel Adapter	22P5298	x	x
Projectors & Lamps			
Lamp for iLV300 (0038A03) Projector	31P9870	7	7
Lamp for iLC300 (0039A03) Projector	31P9910	8	8
Lamp for iLM300 (0037A03) Projector	33L3537	9	9
C400 Wireless Projector	0039WA2	x	x
Lamp for Lenovo M500 (0037A05) Projector	40Y7872	10	10
M500 Projector (0037A05)	40Y78zz	x	x
C500 Projector	0039A05	x	x
Lamp for E400 (0038A04) Projector	73P2775	11	11
Lamp for M400 (0037A04) Projector	73P2790	12	12
Lamp for C400 (0039A04) Projector	73P3191	13	13
C400 Projector	0039A04	x	x
Lamp for ThinkVision E500 (0038A05) Projector	73P4954	14	14
E500 Projector	0038A05	x	x



Lenovo J100



Lenovo USB Headset by Sennheiser

OCM Footnotes

- Compatible with L151, L151p, L171, L171p, L192p and L201p model Flat Panel Monitors.
- Supported on Windows 2000 and Windows XP only.
- Supported on Window 2000 and Windows XP only. The USB output ports do not support certain High Speed USB 2.0 devices such as cameras and memory keys.
- Requires Windows XP or Windows 2000 w/SP4. It also requires ESS and Trusted Platform Module Co-proc. Power-On-Password is not supported.
- Can be used to mount a Flat Panel Monitor such as the T54, T55, T56, T74, T85, T86.
- To be used in the iLV300 Projector
- To be used in the iLC300 Projector
- To be used in the iLM300 Projector
- To be used in the M500 Projector.
- To be used in the E400 Projector
- To be used in the M400 Projector.
- To be used in the C400 Projector.
- To be used in the E500 Projector.

ThinkPad Z61 Series - Wide Screen



ThinkPad Z61e

15.4" wide,
Lowest cost offering



ThinkPad Z61t with WWAN (select models)

14.1" wide, 3-1 card reader
4.5lbs (2kg), 1.1" thin (28mm)

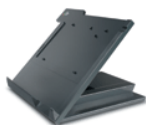


ThinkPad Z61m

with WWAN (select models)
15.4" wide,
expanded WWAN coverage (select models)
6.6lbs (3.0kg), 1.4" thin (35.5mm)

Z61 Series Desktop Expansion Accessories

- 2503-10U ThinkPad Advanced Dock
- 2504-10U ThinkPad Advanced Mini Dock
- 2505-10W ThinkPad Essential Port Replicator



ThinkPad Adjustable
Notebook Stand

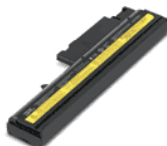
Z61 Series Memory, Adapters & Accessories

- 40Y7732 256MB PC2-5300 CL5 NP DDR2 SDRAM SODIMM
- 40Y7733 512MB PC2-5300 CL5 NP DDR2 SDRAM SODIMM
- 40Y7734 1GB PC2-5300 CL5 NP DDR2 SDRAM SODIMM
- 40Y7659 ThinkPad 90W AC Adapter
- 40Y7630 ThinkPad 90W AC/DC Combo Adapter
- 40Y7676 ThinkPad Adjustable Notebook Stand
- 40Y8518 **Lenovo USB/Analog Headset by Sennheiser**



Z61 Series Batteries

- 40Y6789 ThinkPad Advanced Ultrabay Battery
- 40Y6791 ThinkPad Z60t Series 4 Cell Li-Ion Battery
- 40Y6793 ThinkPad Z60t Series 7 Cell Li-Ion Battery
- 40Y6795 ThinkPad Z60m Series 6 Cell Li-Ion Battery
- 40Y6797 ThinkPad Z60m/T60/R60 Series 9 Cell Li-Ion Battery
- 40Y6725 ThinkPad External Battery Charger



ThinkPad 9 Cell Battery

Z61 Series Storage Accessories

- 40Y8723 ThinkPad 60GB 5400 rpm Serial ATA Hard Drive
- 40Y8721 ThinkPad 100GB 5400 rpm Serial ATA Hard Drive
- 41N3012 ThinkPad 60GB 7200 rpm Serial ATA Hard Drive
- 41N3013 ThinkPad 100GB 7200 rpm Serial ATA Hard Drive
- 40Y8725 ThinkPad Serial ATA Hard Drive Bay Adapter
- 40Y8621 ThinkPad CD-RW/DVD-ROM Combo II Ultrabay Slim Drive (Flat Bezel)
- 40Y8623 ThinkPad Super Multi-Burner Ultrabay Slim Drive (Flat Bezel)
- 05K9276 USB Portable Diskette Drive
- 40Y7421 USB 2.0 Memory Key – 1GB
- 40Y8590 USB 2.0 Memory Key – 512MB
- 40Y8587 USB 2.0 Memory Key – 256MB
- 22P7196 ThinkPlus Portable 40GB USB 2.0 Hard Drive
- 40Y8726 ThinkPlus Portable 80GB USB 2.0 Hard Drive

ThinkPad R60 Series

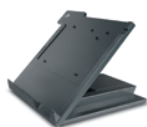


R60/R60e Highlights

Thin and light - Start at 5.6lbs and 1.3" thin (R60) and 5.9lbs. and 1.3" thin (R60e)
Intel Centrino Mobile Technology for excellent wireless performance and extended battery life.
Choice of Screen Size – 14.1" & 15" TFT Displays

R60 Series Desktop Expansion Accessories

- 2503-10U** ThinkPad Advanced Dock
- 2504-10U** ThinkPad Advanced Mini Dock
- 2505-10W** ThinkPad Essential Port Replicator



ThinkPad Adjustable Notebook Stand

R60 Series Memory, Adapters, & Accessories

- 40Y7732** 256MB PC2-5300 CL5 NP DDR2 SDRAM SODIMM
- 40Y7733** 512MB PC2-5300 CL5 NP DDR2 SDRAM SODIMM
- 40Y7734** 1GB PC2-5300 CL5 NP DDR2 SDRAM SODIMM
- 40Y7676** ThinkPad Adjustable Notebook Stand
- 40Y7620** ThinkPad Convertible Monitor Stand
- 40Y8121** ThinkPad Serial Parallel Port Bay Adapter
- 40Y8518** **Lenovo USB/Analog Headset by Sennheiser** ★



Lenovo USB/Analog Headset By Sennheiser

R60 Series Batteries & Adapters

- 40Y6789** ThinkPad Advanced Ultrabay Battery
- 40Y6799** ThinkPad T60/R60 Series 6 Cell Li-Ion Battery
- 40Y6797** ThinkPad Z60m/T60/R60 Series 9 Cell Li-Ion Battery
- 40Y6725** ThinkPad External Battery Charger
- 40Y7696** ThinkPad 65W AC Adapter (For Integrated Graphics Models)
- 40Y7659** ThinkPad 90W AC Adapter (For Discrete Graphics Models)
- 40Y7630** ThinkPad 90W AC/DC Combo Adapter

R60 Series Storage Accessories

- 40Y8723** ThinkPad 60GB 5400 rpm Serial ATA Hard Drive
- 41N5662** ThinkPad 80GB 5400 rpm Serial ATA Hard Drive
- 40Y8721** ThinkPad 100GB 5400 rpm Serial ATA Hard Drive
- 41N3012** ThinkPad 60GB 7200 rpm Serial ATA Hard Drive
- 41N3013** ThinkPad 100GB 7200 rpm Serial ATA Hard Drive
- 40Y8725** ThinkPad Serial ATA Hard Drive Bay Adapter
- 73P3275** ThinkPad CD-RW/DVD-ROM Combo Ultrabay Enhanced Drive
- 40Y8624** ThinkPad Super Multi-Burner Ultrabay Enhanced Drive
- 05K9276** USB Portable Diskette Drive
- 40Y7421** USB 2.0 Memory Key – 1GB
- 40Y8590** USB 2.0 Memory Key – 512MB
- 40Y8587** USB 2.0 Memory Key – 256MB
- 22P7196** Lenovo Portable 40GB USB 2.0 Hard Drive
- 40Y8726** Lenovo Portable 80GB USB 2.0 Hard Drive

ThinkPad T60 Series: Perfect Balance of Performance and Portability

Key Features

- Thin and light design – approximately one inch thin and starting at 4.6 lbs travel weight
- Long battery life – up to 6 hours with 6-cell battery, up to 9 hours with 9-cell battery
- Available in 14" and 15" models
- **NEW!** Verizon* Integrated 3G Wireless WAN (Select models, requires service contract)
- T60p Mobile Workstation models available, offering 256MB graphics memory and 4GB system memory support (3GB addressable)

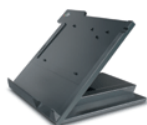
* **Activating Verizon Wireless Service:** Lenovo customers will be contacted after purchase to activate service; requires separate agreement with Verizon Wireless and is subject to the Customer Agreement, Calling Plan and credit approval. Service and airtime charges will apply; \$175 early termination fee. Verizon Wireless, not Lenovo, is solely responsible for service. Service not available in all areas; purchaser is responsible for verifying that service is available for the intended location before purchasing a computer equipped with WAN card. Network details, coverage limitations and maps at [\[insert designated website per applicable geo\]](#).

ThinkPad T60



T60 Series Desktop Expansion Accessories

- 250310U** ThinkPad Advanced Dock
- 250410U** ThinkPad Advanced Mini Dock
- 250510W** ThinkPad Essential Port Replicator



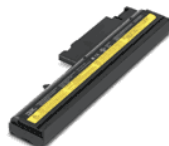
ThinkPad Adjustable Notebook Stand

T60 Series Adapters & Accessories

- 40Y7696** ThinkPad and Lenovo 65W AC Adapter (for Integrated Graphics Models)
- 40Y7659** ThinkPad and Lenovo 90W AC Adapter (for Discrete Graphics Models)
- 40Y7630** ThinkPad and Lenovo 90W AC/DC Combo Adapter
- 40Y7676** ThinkPad Adjustable Notebook Stand
- 40Y7620** ThinkPad Convertible Monitor Stand
- 40Y8121** ThinkPad Serial/Parallel Port Bay Adapter
- 40Y8518** **Lenovo USB/Analog Headset by Sennheiser** ★

T60 Series Batteries

- 40Y6789** ThinkPad Advanced Ultrabay Battery
- 40Y6799** ThinkPad T60/R60 Series 6 cell Li-Ion Battery
- 40Y6797** ThinkPad Z60m/T60/R60 Series 9 cell Li-Ion Battery
- 40Y6725** ThinkPad External Battery Charger



ThinkPad 9 Cell Battery

T60 Series Storage Accessories

- 40Y8723** ThinkPad 60GB 5400 rpm Serial ATA Hard Drive
- 41N5662** ThinkPad 80GB 5400 rpm Serial ATA Hard Drive
- 40Y8721** ThinkPad 100GB 5400 rpm Serial ATA Hard Drive
- 41N3012** ThinkPad 60GB 7200 rpm Serial ATA Hard Drive
- 41N3013** ThinkPad 100GB 7200 rpm Serial ATA Hard Drive
- 40Y8725** ThinkPad Serial ATA Hard Drive Bay Adapter
- 40Y8621** ThinkPad CD-RW/DVD-ROM Combo II Ultrabay Slim Drive
- 40Y8623** ThinkPad Super Multi-Burner Ultrabay Slim Drive (Flat Bezel)
- 05K9276** USB Portable Diskette Drive
- 40Y7421** USB 2.0 Memory Key – 1GB
- 40Y8590** USB 2.0 Memory Key – 512MB
- 40Y8587** USB 2.0 Memory Key – 256MB
- 22P7196** Lenovo Portable 40GB USB 2.0 Hard Drive
- 40Y8726** Lenovo Portable 80GB USB 2.0 Hard Drive

ThinkPad X60 Series: The Fastest ThinkPad Ever in a Versatile Ultraportable

Key Features

Increase Mobility:

- **New!** Mechanical design is lighter yet allows for more port access, better heat reduction
- Up to 11% lighter and 7% smaller footprint than lightest and smallest X32
- X60s and X60 have up to 31% longer battery life than longest lasting X41 and X32
- Integrated Wireless WAN available

Increased Performance:

- **New!** 667MHz Intel processors and 945GM chipset [3]
- **New!** 2.5" hard drives available on LV/ULV X60s, including three new high performance hard drives: 100GB/60GB 7200 rpm and 100GB 5400 rpm
- Latest Intel Napa architecture featuring processors and chipset featuring a 667MHz front side bus, up to 2GB of DDR2 533MHz memory (667MHz in 2Q06)* and Express Card via USB adapter*

ThinkPad X60 with X6 Ultrabase



X60 Series Desktop Expansion Accessories

- 40Y8116** ThinkPad X6 Ultrabase w/Ultra Slim Device Slot
- 40Y8621** ThinkPad CD-RW/DVD-ROM Combo II Ultrabay Slim Drive (Flat Bezel)
- 40Y8623** ThinkPad Super Multi-Burner Ultrabay Slim Drive (Flat Bezel)
- 40Y8725** ThinkPad Serial Hard Drive Bay Adapter



X60 Series Adapters & Accessories

- 40Y7696** ThinkPad and Lenovo 65W AC Adapter
- 40Y7630** ThinkPad and Lenovo 90W AC/DC Combo Adapter



- 40Y7676** ThinkPad Adjustable Notebook Stand



- 40Y7620** ThinkPad Convertible Monitor Stand

- 40Y8518** Lenovo USB/Analog Headset by Sennheiser



X60 Series Storage Accessories

- 40Y8723** ThinkPad 60GB 5400rpm Serial ATA Hard Drive
- 40Y8721** ThinkPad 100GB 5400rpm Serial ATA Hard Drive
- 41N3012** ThinkPad 60GB 7200 rpm Serial ATA Hard Drive
- 41N3013** ThinkPad 100GB 7200 rpm Serial ATA Hard Drive
- 22P7196** ThinkPlus Portable 40GB USB 2.0 Hard Drive
- 40Y8726** ThinkPlus Portable 80GB USB 2.0 Hard Drive
- 40Y8638** Lenovo USB 2.0 Super Multi-Burner Drive
- 40Y8637** ThinkPlus USB 2.0 CD-RW/DVD-ROM Combo II Drive
- 05K9276** USB Portable Diskette Drive
- 40Y7421** USB 2.0 Memory Key – 1GB
- 40Y8590** USB 2.0 Memory Key – 512MB
- 40Y8587** USB 2.0 Memory Key – 256MB



X60 Series Batteries

- 40Y6999** ThinkPad X60 Series 4 cell Slim Line Battery (X60s Series systems only)
- 40Y7001** ThinkPad X60 Series 4 cell Enhanced Capacity Battery
- 40Y7003** ThinkPad X60 Series 8 cell High Capacity Battery
- 40Y7005** ThinkPad X60 Series Extended Life Battery

ThinkPad X41 Tablet: Better by Design

Bi-Directional Integrated
Fingerprint Reader



ThinkPad
X41 Tablet
w/ Digitizer Pen
(shown above)

Part Number
73P5188

ThinkPad X41 Tablet Batteries

- 73P5167** - ThinkPad X41 Tablet 4 Cell Li-ion Battery
- 73P5168** - ThinkPad X41 Tablet 8 Cell Li-ion Battery
- 92P1006** - ThinkPad X40 Series Extended Life Battery
Works with X40, X41, and X41 Tablet

- Standard system battery life of 2.6 hrs (4 Cell) or 6.3 hrs (8 Cell) or 8.5 hrs (Extended Life and 8 cell)
- Notched design to accommodate tablet screen swivel hinge
- Proven battery technology with balanced performance, capacity and longevity
- Designed and tested to ensure safety and compatibility
- World Wide support and one year warranty [1]
- Achieve All Day Computing by purchasing an additional Cell & Extended Life ThinkPad Battery

[Some optional battery combinations help to provide all day computing,

*Battery life will vary based on many factors, including brightness, applications, power management, battery conditioning and customer preferences



ThinkPad X41 Tablet Storage

- 22P7196** ThinkPlus Portable 40GB USB 2.0 Hard Drive
- 40Y8726** ThinkPlus Portable 80GB USB 2.0 Hard Drive
- 40Y8638** Lenovo USB 2.0 Super Multi-Burner Drive
- 40Y8637** ThinkPlus USB 2.0 CD-RW/DVD-ROM Combo II Drive
- 05K9276** USB Portable Diskette Drive
- 40Y7421** USB 2.0 Memory Key – 1GB
- 40Y8590** USB 2.0 Memory Key – 512MB
- 40Y8587** USB 2.0 Memory Key – 256MB
- 73P3358** ThinkPad 60GB Mini Hard Drive

ThinkPad X4 Dock

Part Number 250610U



Provides flexible expansion and cable management for users of ThinkPad ultraportable and tablet systems

– One-step connection to peripherals and office equipment

– Device bay for optical drive or second HDD

• **Same functionality as ThinkPad X4 UltraBase in a stationary form factor**

- 3 USB 2.0 ports
- RJ-11 modem, RJ-45 Gigabit Ethernet
- VGA
- Legacy ports – PS/2, serial, parallel
- Ultrabay Slim modular device bay
- Integrated key lock and cable lock slot
- Stereo speakers
- Plus 56W AC adapter

• **Compatible with X40, X41, and X41 Tablet systems**

X4 Dock Compatible Options

- 41U3148** ThinkPad 2nd HDD Adapter for Ultrabay Slim
- 73P3270** ThinkPad 8X Max [6] DVD-ROM Ultrabay Slim Drive
- 73P3288** ThinkPad CD-RW/DVD-ROM Combo II Ultrabay Slim Drive
- 40Y8623** ThinkPad Super Multi-Burner Ultrabay Slim Drive (Curved Bezel)

Use your ThinkPad in Table mode...Anywhere, Anytime.



Comfort wrist slot to provide stability while mobile
Adjustable, padded shoulder strap for convenient carrying
Form fitted to Tablet notebook for lightweight convenience
Removable protective plastic for screen protection

ThinkPad X41 Tablet Sleeve

Part Number 30R4959

Protect your Tablet with one of our quality ThinkPad Carrying Cases



Case Recommendations work with Tablet in Sleeve

10K0207	Nylon	Yes
10K0209	Premiere Leather	Yes
73P3597	Expander	Yes
73P3598	Organizer	Yes
73P3599	Backpack	Yes
73P3600	Leather Attaché	No, too tight
73P5186	Leather Ultraportable	No, not high enough to zip

Use any Case if Tablet not in Sleeve.



ThinkPad Advanced Mini-Dock

Description

Part Number

- Z60t 2511/2512/2513/2514
- Z60m 2529/2530/2531/2532
- X31/X32 2672/2673/2884/2885
- X40 2371/2372/2382/2386
- X41 2525/2526/2527/2528
- X60 Tablet 1868/1869/1868/1869
- X60s 1702/3145 2522/A
- T43 1871/1872/1873/1876
- T43ip 2668/2669/2686/2687
- R51e 1843/1844
- R51 2883/2887/2888/2889
- R32 1846/1847/1848/1849
- R32 1858/1859/1860/1861/1862

Description	Part Number	Z60t	Z60m	X31/X32	X40	X41	X60	X60s	T43	T43ip	T60ip	R51e	R51	R32	R32
Memory															
SO DIMM/SDRAM															
256MB PC2700 CL2.5 Non-Parity DDR SDRAM SODIMM	31P9830			1	x										x
512MB PC2700 CL2.5 Non-Parity DDR SDRAM SODIMM	31P9832			1	x										x
1GB PC2700 CL2.5 Non-Parity DDR SDRAM SODIMM	31P9834			1	x										x
256MB PC2-5300 CL5 Non-Parity DDR2 SDRAM SODIMM	40Y7732	2	2			2	2	x	x	2	2	x	2	2	2
512MB PC2-5300 CL5 Non-Parity DDR2 SDRAM SODIMM	40Y7733	2	2			2	2	x	x	2	2	x	2	2	2
1GB PC2-5300 CL5 Non-Parity DDR2 SDRAM SODIMM	40Y7734	2	2			2	2	x	x	2	2	x	2	2	2
256MB PC2-4200 CL4 Non-Parity DDR2 SDRAM SODIMM	73P3840	x	x			x	x			x	x				x
512MB PC2-4200 CL4 Non-Parity DDR2 SDRAM SODIMM	73P3842	x	x			x	x			x	x				x
1GB PC2-4200 CL4 Non-Parity DDR2 SDRAM SODIMM	73P3844	x	x			x	x			x	x				x
Storage															
Adapters															
ThinkPad Serial ATA Hard Drive Bay Adapter	40Y8725	x	x					4	4			x			
ThinkPad Second Hard Disk Drive Adapter for UltraBay Slim	62P4554				5	5	6					x	x		x
CD-ROM Drives															
ThinkPlus USB 2.0 CD-RW/DVD-ROM Combo II Drive	40Y8637	x	x	x	x	x	x	x	x	x	x	x	x	x	x
ThinkPad CD-RW/DVD-ROM Combo II UltraBay Slim Drive - with Flat Bezel	40Y8621	x	8		5	5	6	4	9	9					8
ThinkPad Super Multi-Burner Ultrabay Slim Drive with Curved Bezel	40Y8622	10	x		5	5	6	11	11	x	x	10			x
ThinkPad Super Multi-Burner Ultrabay Slim Drive with Flat Bezel	40Y8623	x	12		5	5	6	4	4	x	13	x			x
Lenovo USB 2.0 Super Multi-Burner Drive	40Y8638	x	x	x	x	x	x	x	x	x	x	x	x	x	x
ThinkPad 8X Max DVD-ROM UltraBay Slim Drive	73P3270	x	x	14	5	5	6	4	4	x	x	x			8
ThinkPad CD-RW/DVD-ROM Combo UltraBay Enhanced Drive	73P3275	x	15												x
ThinkPad CD-RW/DVD-ROM Combo II UltraBay Slim Drive	73P3288	16	x		5	5	6	4	4	x	x	16			8
ThinkPad Multi-Burner Plus UltraBay Enhanced Drive	73P3312	x	3												x
ThinkPad Multi-Burner Plus UltraBay Slim Drive	73P3342	x	x		5	5	6			x	x				12
Diskette Drives															
USB Portable Diskette Drive	05K9276	x	x	7	x	x	x	x	x	x	x	x	x	7	x
Hard Disk Drives/Non Hot Swap															
ThinkPad High Speed 40GB Hard Disk Drive	08K9816				17	18	18	19			20	20		20	20
ThinkPad 80GB Hard Disk Drive (5400rpm)	09N4273				x	18	18	19			20	20		20	20
ThinkPad 4GB Microdrive with PC Card	09N4280				x	x	x	x			x	x		x	x
ThinkPad 60GB Hard Drive (7200 rpm) Multi-Pack	17R1716										x	x		x	x
Portable 40GB USB 2.0 Hard Drive with Rescue and Recovery	22P7196	x	x	21	21	21	21	x	x	21	21	x	x	21	21
ThinkPad 60GB Hard Drive (7200 rpm)	39W9106										x	x			x
ThinkPad 100GB Hard Drive (5400 rpm)	40Y8716			x						20	20		22	20	20
ThinkPad 100GB Serial ATA Hard Drive (5400rpm)	40Y8721	23	23					24	25			23			
ThinkPad 60GB Serial ATA Hard Drive (5400rpm)	40Y8723	23	23					24	25			23			
Portable 80GB USB 2.0 Hard Drive with Rescue and Recovery v3	40Y8726	21	21	21	21	21	21	x	x	21	21	x	21	21	21
ThinkPad 60GB Serial ATA Hard Drive (7200rpm)	41N3012	23	23					24	25			23			
ThinkPad 100GB Serial ATA Hard Drive (7200rpm)	41N3013	23	23					24	25			23			
ThinkPad 60GB Hard Disk Drive (5400rpm)	73P3357				18	18	19			20	20			20	20
ThinkPad 60GB Mini Hard Drive	73P3358				x	x	x		26						
ThinkPad Docking Solutions															
Docking - T40/R50 Series															
ThinkPad Dock II with Power Cord	287710U			x						x	x			x	x
ThinkPad Mini-Dock with Power Cord	287810U			x						x	x			x	x
ThinkPad Port Replicator II	74P6733			x						x	x			x	x
Docking - T60/Z60 Series															
ThinkPad Essential Port Replicator	250510W	x	x									x			
ThinkPad Advanced Dock	230310U	27	27									27			
ThinkPad Advanced Mini Dock	230410U	27	27									27			
Docking - X Series Ultraportables															
ThinkPad X6 UltraBase	40Y8116							x	x						
ThinkPad X4 Dock	250610U				x	x	x								
ThinkPad X4 UltraBase	92P3429				x	x									
Multimedia															
Other															
ThinkVision USB Soundbar	40Y7616	28	28	28	28	28	28	28	28	28	28	28	28	28	28



High-Speed ThinkPad Memory



ThinkPad 2nd HDD Adapter w/ 80GB Hard Drive

Description	Part Number	Model Numbers															
		Z60t	Z60m	X31	X40	X41	X41 Tablet	X60	X60s	T43	T43p	T60p	R51e	R51	R52	R52	
Networking																	
Adapters/Wireless																	
ThinkPad 11a/b/g Wireless LAN Mini-PCI Express Adapter - Europe	40Y7026	29								29	29					29	
ThinkPad 11a/b/g Wireless LAN Mini-PCI Express Adapter - Middle East	40Y7030	29								29	29					29	
Intel PRO/Wireless 2915ABG Mini-PCI Adapter - Europe	41N2991		29	30			29	29		29	29					29	29
Intel PRO/Wireless 3945ABG Mini-PCI Express Adapter - Europe	41N3009								29	29			29				
ThinkPad 11a/b/g Wireless LAN Mini-PCI Adapter II - US	73P4301		29	30	29	29	29					29	29			29	29
Security Solutions																	
Physical Protection																	
Kensington MicroSaver 64068E Security Cable Lock from Lenovo	73P2582	x	x	x	x	x	x	x	x	x	x	x	x	x	x	x	x
USB Fingerprint Reader	73P4774	31	31	31	31	31	31	31	31	31	31	31			31	31	31
Smart Card Solutions																	
Gemplus GemPC Smart Card Reader from Lenovo	41N3004	x	x	21	21	21	21	x	x	21	21	x	21	21	21	21	21
Gemplus GemPC USB Smart Card Reader from Lenovo	41N3040	x	x	21	21	21	21	x	x	21	21	x	21	21	21	21	21
Power																	
AC Adapters																	
ThinkPad 72W AC Adapter	02K6699			x	x	x	x					x	x		x	x	x
ThinkPad Ultrabay Slim 56W AC Adapter	02K6880			x	x	x	x										
ThinkPad 90W AC Adapter	40Y7659	x	x						x	x				x			
ThinkPad 90W AC/DC Combo Adapter	40Y7630	x	x						x	x				x			
ThinkPad and Lenovo 65W Ultrabay Slim AC Adapter	40Y7696								x	x				32			
ThinkPad 72W Slim AC/DC Combo Adapter	73P4485			x	x	x	x					x	x		x	x	x
Batteries																	
ThinkPad UltraBay 2000 Lithium-Ion Battery	02K6646				33												
ThinkPad X30 Series Extended Life Battery	02K7041				x												
ThinkPad Ultrabay Slim Li-Polymer Battery	08K8190					5						x	x			x	x
ThinkPad Advanced Ultrabay Battery	40Y6789	x	x						4	4				x			
ThinkPad Z60t 4 Cell Li-Ion Battery	40Y6791	x															
ThinkPad Z60t 7 Cell Li-Ion Battery	40Y6793	x															
ThinkPad Z60m 6 Cell Li-Ion Battery	40Y6795		x														
ThinkPad Z60m 9 Cell Li-Ion Battery	40Y6797		x														
ThinkPad T60 Series 6 Cell Lithium-Ion Battery	40Y6799																
ThinkPad X60 Series 4 Cell Slim Line Battery	40Y6999										x						
ThinkPad X60 Series 4 Cell Enhanced Capacity Battery	40Y7001									x	x						
ThinkPad X60 Series 8 Cell High Capacity Battery	40Y7003									x	x						
ThinkPad X60 Series Extended Life Battery	40Y7005									x	x						
ThinkPad X41 Tablet 4-Cell Li-Ion Battery	73P5167									x							
ThinkPad X41 Tablet 8-Cell Li-Ion Battery	73P5168									x							
ThinkPad X40 Series Extended Life Battery	92P1006					x	x	34									
ThinkPad X40 Series 4-Cell Li-Ion Battery	92P1009					x	x										
ThinkPad X30 Series 6-Cell Li-Ion Battery	92P1097			x													
ThinkPad T40/R50 Series 6-Cell Li-Ion Battery	92P1101											x	x		x	x	x
ThinkPad T40/R50 Series 9-Cell Li-Ion Battery	92P1102											x	x		x	x	x
ThinkPad X40 Series 8-Cell Li-Ion Battery	92P1119					x	x										
Chargers																	
ThinkPad Multiple Battery Charger II	22P9040			35	35	35	35					35	35		35	35	35
ThinkPad External Battery Charger	40Y7625	36	36							x	x			x			



90W AC/DC Combo Adapter



Gemplus GemPC Smartcard Reader from Lenovo



ThinkPad Ultrabay Li-Ion Battery

Description	Part Number	Model														
		Z60i	Z60m	X31	X40	X41	X41 Tablet	X60	X60s	T43	T43p	T60p	R51e	R51	R52	R52
Accessories																
Carrying Cases																
ThinkPad X41 Tablet Sleeve	30R4959						x									
ThinkPad Vertical Roller Case	40Y7723			x	x	x	x			x	x		x	x	x	x
ThinkPad Expander Carrying Case	73P3597	x	x	x	x	x	x	x	x	x	x	x	x	x	x	x
ThinkPad Organiser Carrying Case	73P3598			x	x	x	x	x	x	x	x	x	x	x	x	x
ThinkPad BackPack Carrying Case	73P3599	x	x	x	x	x	x	x	x	x	x	x	x	x	x	x
ThinkPad Leather Attache Carrying Case	73P3600			x	x	x	37	x	x	x	x	x	x	x	x	x
ThinkPad Leather Ultraportable Carrying Case	73P5186			38	38	38	37	38	38	38	38	38				
Keyboards																
Business Black Preferred Pro Full-size PS/2 Keyboard	31P7415	39	39	40		39	41							39	39	39
USB Keyboard with UltraNav	31P89XX	x	x	21	21	x	21	x	x	21	21	x	x	21	21	21
USB Travel Keyboard with UltraNav	31P9490	21	21	21	21	21	21	21	21	21	21	21	21	21	21	21
USB 17-Key Business Black Numeric Keypad	33L3225	x	x	42	42	42	42	x					x	x	x	42
Business Black Enhanced Performance USB Keyboard	73P2620	43	43	43	43	43	43	43	43	43	43	43	43	43	43	43
Business Black Preferred Pro USB Fingerprint Keyboard	73P4730	31	31	31	31	31	31	31	31	31	31	31	31		31	31
Business Black Enhanced Wireless Keyboard & Optical Mouse	73P4067	21	21	21	21	21	21	21	21	21	21	21	21	21	21	21
Business Black Preferred Pro USB Keyboard	73P5220	x	x	x	x	x	x	x	x	x	x	x	x	x	x	x
Pointing Devices																
USB Optical Wheel Mouse	06P4069	x	x	44	44	x	x	x	x	44	44	x	x	x	x	x
Optical 3-Button ScrollPoint Mouse (800dpi) PS/2 & USB	31P7405	x	x	44	44	x	x	x	x	44	44	x	x	x	x	x
Optical 3-Button Travel Wheel Mouse (800dpi) PS/2 & USB	31P7410	x	x	44	44	x	x	x	x	44	44	x	x	x	x	x
Optical 3-Button ScrollPoint Pro Mouse (800dpi) PS/2 & USB	31P8700	x	x	44	44	x	x	x	x	44	44	x	x	x	x	x
TrackPoint Cap Collection	73P2698	x	x	x	x	x	x	x	x	x	x	x	x	x	x	x
Memory Keys																
Lenovo USB 2.0 Memory Key - 1GB	40Y7421	21	21	21	21	21	21	21	21	21	21	21	21	21	21	21
Lenovo USB 2.0 Essential Memory Key - 256MB	40Y8587	21	21	21	21	21	21	21	21	21	21	21	21	21	21	21
Lenovo USB 2.0 Essential Memory Key - 512MB	40Y8590	21	21	21	21	21	21	21	21	21	21	21	21	21	21	21
Lenovo USB 2.0 Memory Key - 256MB	40Y8594	21	21	21	21	21	21	21	21	21	21	21	21	21	21	21
Lenovo USB 2.0 Memory Key - 512MB	40Y8596	21	21	21	21	21	21	21	21	21	21	21	21	21	21	21
Other																
ThinkPad Monitor Stand	22P5265	x	x	x	x	x	x			x	x		x	x	x	x
ThinkVision TFT Radial Arm	19K4464	x	x	x	x	x	x	x	x	x	x	x	x	45	x	x
USB Serial Parallel Adapter	22P5298	x	x	x	x	x	x			x	x		x	x	x	x
ThinkPad Convertible Monitor Stand	40Y7620	x	x					x	x			x				
ThinkPad Adjustable Notebook Stand	40Y7676	x	x	46	46	46	46	x	x	46	46	x	46	46	46	46
ThinkPad Serial/Parallel Port Bay Adapter	40Y8121											x				
ThinkPad X41 Tablet Digitiser Pen	73P5188						x									
Projectors																
Lamp for iLV300 (0038A03) Projector	31P9870	47	47	47	47	47	47	47	47	47	47	47	47	47	47	47
Lamp for iLC300 (0039A03) Projector	31P9910	48	48	48	48	48	48	48	48	48	48	48	48	48	48	48
Lamp for iLM300 (0037A03) Projector	33L3537	49	49	49	49	49	49	49	49	49	49	49	49	49	49	49
C400 Wireless Projector	0039WA2	50	50	50	50	50	50	x	x	50	50	x	50	51	51	51
Lamp for Lenovo M500 (0037A05) Projector	40Y7872	52	52			52	52	52	52	52	52	52	52	52	52	52
M500 Projector	0037A05	x	x			x	x	x	x	x	x	x	x		x	x
C500 Projector	0038A05	x	x			x	x	x	x	x	x	x	x		x	x
Lamp for E400 (0038A04) Projector	73P2775	53	53	53	53	53	53	53	53	53	53	53	53	53	53	53
Lamp for M400 (0037A04) Projector	73P2790	54	54	54	54	54	54	54	54	54	54	54	54	54	54	54
Lamp for C400 (0039A04) Projector	73P3191	55	55	55	55	55	55	55	55	55	55	55	55	55	55	55
C400 Projector	0039A04	x	x	x	x	x	x	x	x	x	x	x	x	x	x	x
Lamp for ThinkVision E500 (0038A05) Projector	73P4954	56	56	56	56	56	56	56	56	56	56	56	56	56	56	56
E500 Projector	0038A05	x	x	x	x	x	x	x	x	x	x	x	x	x	x	x

Add a Lenovo Service Plan – see back page



Backpack Carry Case



Wireless Keyboard & Mouse



512MB USB 2.0 Memory Key



DLP Projectors

OCM ThinkPad Footnotes

1. PC2700 and PC2100 memory can co-exist on the same system but will operate at the PC2100 speed. The X32 Series uses PC2700 memory only.
2. PC2-5300 and PC2-4200 memory can co-exist on the same system but will operate at the PC2-4200 speed.
3. Requires ThinkPad X3 Ultrabase (46P7912).
4. Requires the X6 Ultrabase (40Y8116)
5. Requires ThinkPad X4 UltraBase (92P3429).
6. Requires a ThinkPad X4 Dock 73P453x.
7. Supported on an enabled USB port with Windows 98 or Windows 2000.
8. Although this option will function correctly, option 73P3275 will provide a better mechanical fit.
9. Although this option will function correctly, Option 73P3288 will provide a better mechanical fit.
10. Although this option will function correctly, Option 40Y8623 will provide a better mechanical fit.
11. Although this option will function correctly, Option 40Y8623 will provide a better mechanical fit. This option also requires the X6 Ultrabase 40Y8116.
12. Although this option will function correctly, option 73P3312 will provide a better mechanical fit.
13. Although this option will function correctly, Option 40Y8622 will provide a better mechanical fit.
14. Requires the ThinkPad Slim Drive Adapter for Ultrabay 2000 (62P4557) and the ThinkPad X3 Ultrabase (46P7912).
15. Requires the ThinkPad Enhanced Drive Adapter for Ultrabay 2000 (73P3268)
16. Although this option will function correctly, Option 40Y8621 will provide a better mechanical fit.
17. May be used as the primary hard disk drive or requires ThinkPad X3 Ultrabase (46P7912) and 2nd HDD Adapter for Ultrabay 2000 (08K6068)
18. Requires ThinkPad X4 UltraBase (92P3429) and the ThinkPad Second HDD Adapter for Ultrabay Slim (62P4554).
19. Requires ThinkPad X4 Dock (73P453x) and the ThinkPad Second HDD Adapter for UltraBay Slim (62P4554).
20. May be used as the primary Hard Disk Drive or requires the ThinkPad Second HDD Adapter for Ultrabay Slim (62P4554) when used in the Ultrabay Slim.
21. Supported on Windows 2000 and Windows XP only.
22. May be used as the primary system Hard Disk Drive upgrade.
23. Can be used as the primary HDD or with the ThinkPad Serial ATA Hard Drive Ultrabay Slim Adapter 40Y8725 in the Ultrabay or in the ThinkPad Advanced Dock 250410x.
24. For 2nd HDD support in the ThinkPad X6 UltraBase 40Y8116, the ThinkPad Serial Hard Drive Bay Adapter 40Y8725 is required. These drives are also supported as the primary hard drive upgrade for usage in the X60 system.
25. These drives are not compatible with M/Ts 2533 and 2534. For 2nd HDD support in the ThinkPad X6 UltraBase 40Y8116, the ThinkPad Serial Hard Drive Bay Adapter 40Y8725 is required. These drives are also supported as the primary hard drive upgrade for usage in the X60 system.
26. Only compatible with M/Ts 2533 and 2534.
27. Integrated graphics models support all docking functions except DVI-D.
28. Compatible with L151, L151p, L171, L171p, L192p and L201p model Flat Panel Monitors.
29. System must be wireless-upgradable.
30. Only compatible with the ThinkPad X32.
31. Requires Windows XP or Windows 2000 w/SP4. It also requires ESS and Trusted Platform Module Co-proc. Power-On-Password is not supported.
32. Compatible with the 195x systems.
33. Requires ThinkPad X3 Ultrabase (46P7912)
34. This battery is not compatible with the ThinkPad X41 Tablet Sleeve 30R4959.
35. Requires an AC Power Adapter like the one that came with the system or the 72W AC/DC Combo Adapter or the 72W AC Adapter or the ThinkPad Ultraportable 56W AC Adapter.
36. Requires the 90W AC Adapter 40Y7659 or the adapter provided with the system.
37. Tablet Sleeve (30R4959) must be removed in order to fit into the case.
38. Supports 14 inch maximum models.
39. PS/2 function can be obtained through the ThinkPad Port Replicator or the ThinkPad Dock.
40. Cannot be attached directly to the system. Requires the ThinkPad X3 UltraBase (46P7912) or other Docking Solution.
41. Requires a ThinkPad X4 Dock 2506xxx.
42. Early versions of Windows 98 may require the USB device to be replugged if it is not recognized after Standby Mode.
43. Supported on Window 2000 and Windows XP only. The USB output ports do not support certain High Speed USB 2.0 devices such as cameras and memory keys.
44. Windows 95 and Windows NT do not support the USB attachment.
45. Can be used to mount a Flat Panel Monitor such as the T54, T55, T56, T74, T85, T86.
46. System may be placed on the ledge, but no port replication or docking support is provided.
47. To be used in the iLV300 Value Data/Video Projector (M/T 0038A03)
48. To be used in the iLC300 Conference Room Data/Video Projector (M/T 0039A03)
49. To be used in the iLM300 MicroPortable Data/Video Projector 0037-A03.
50. Projector can be used as a wired projector.
51. Will work as a wired Projector like the C400.
52. To be used in the M500 Projector.
53. To be used in the E400 Projector
54. To be used in the M400 Projector.
55. To be used in the C400 Projector.
56. To be used in the E500 Projector.

Description	Part Number	Model Numbers															
		A51 8424/8425	A51 8122/3/4	A51 8129/32/3/4/5/6	A51 8105/8107/8109	A52 8155/6/7/8/9/60	A52 8153/8166/7/8/9/70	A52 8161/12/3/5	A52 8287/96	A52 8288/97	A52 8289/98	S51 8172/3/4/5/6/8	M51 8171/8172/8098	M51 8141/8142/8143/8144/8005	M52 8099/8118/8215/8210	M52 8110/8112/8113/8114	E50 8290/12/23/4/5
Pointing Devices																	
USB Optical Wheel Mouse	06P4069	x	x	x	x	x	x	x	x	x	x	x	x	x	x	x	x
Optical 3-Button ScrollPoint Mouse (800dpi) PS/2 & USB	31P7405	x	x	x	x	x	x	x	x	x	x	x	x	x	x	x	x
Optical 3-Button Travel Wheel Mouse (800dpi) PS/2 & USB	31P7410	x	x	x	x	x	x	x	x	x	x	x	x	x	x	x	x
Optical 3-Button ScrollPoint Pro Mouse (800dpi) PS/2 & USB	31P8700	x	x	x	x	x	x	x	x	x	x	x	x	x	x	x	x
Memory Keys																	
Lenovo USB 2.0 Memory Key - 1GB	40Y7421	8	8	8	8	8	8	8	8	x	x	x	8	8	8	8	8
Lenovo USB 2.0 Essential Memory Key - 256MB	40Y8587	8	8	8	8	8	8	8	8	x	x	x	8	8	8	8	8
Lenovo USB 2.0 Essential Memory Key - 512MB	40Y8590	8	8	8	8	8	8	8	8	x	x	x	8	8	8	8	8
Lenovo USB 2.0 Memory Key - 256MB	40Y8594	8	8	8	8	8	8	8	8				8	8	8	8	8
Lenovo USB 2.0 Memory Key - 512MB	40Y8596	8	8	8	8	8	8	8	8				8	8	8	8	8
Other																	
ThinkVision TFT Radial Arm	19K4464	10	10	10	10	10	10	10	10	10	10	10	10	10	10	10	10
USB Serial Parallel Adapter	22P5298	x	x	x	x	x	x	x	x	x	x	x	x	x	x	x	x
ThinkCentre Ultra Small Under Desk Mount	40Y8625				x									x			
Projectors																	
Lamp for iLV300 (0038A03) Projector	31P9870	11	11	11	11	11	11	11	11	11	11	11	11	11	11	11	11
Lamp for iLC300 (0039A03) Projector	31P9910	12	12	12	12	12	12	12	12	12	12	12	12	12	12	12	12
Lamp for iLM300 (0037A03) Projector	33L3537	13	13	13	13	13	13	13	13	13	13	13	13	13	13	13	13
C400 Wireless Projector	0039WA2	14	14	14	14	14	14	14	14	x	x	14	14	14	14	14	14
Lamp for Lenovo M500 (0037A05) Projector	40Y7872	15	15	15	15	15	15	15	15	15	15	15	15	15	15	15	15
M500 Projector	0037A05	x	x	x	x	x	x	x	x	x	x	x	x	x	x	x	x
C500 Projector	0039A05	x	x	x	x	x	x	x	x	x	x	x	x	x	x	x	x
Lamp for E400 (0038A04) Projector	73P2775	16	16	16	16	16	16	16	16	16	16	16	16	16	16	16	16
Lamp for M400 (0037A04) Projector	73P2790	17	17	17	17	17	17	17	17	17	17	17	17	17	17	17	17
Lamp for C400 (0039A04) Projector	73P3191	18	18	18	18	18	18	18	18	18	18	18	18	18	18	18	18
C400 Projector	0039A04	x	x	x	x	x	x	x	x	x	x	x	x	x	x	x	x
Lamp for ThinkVision E500 (0038A05) Projector	73P4954	19	19	19	19	19	19	19	19	19	19	19	19	19	19	19	19
E500 Projector	0038A05	x	x	x	x	x	x	x	x	x	x	x	x	x	x	x	x

OCM ThinkCentre Footnotes

1. PC2-4200 and PC2-3200 memory can co-exist on the same system but will operate at the PC2-3200 speed.
2. PC2-5300 and PC2-4200 memory can co-exist on the same system but will operate at the PC2-4200 speed.
4. Compatible with L151, L151p, L171, L171p, L192p and L201p flat panel monitors.
5. Compatible with the L151, L151p, L171, L171p, L192p and L201p flat panel monitors.
6. Compatible with 8171 models 11x-1Bx, 21x-2Fx, 2Px, 31x, 33x-3Lx, 41x-4Px, 51x-55x, A1x-A8x, B1x-BDx, CAx-CHx, D1x-DBx; 8172 models 21x, 31x-34x, 3Fx, 41x, A1x, B1x, B2x. Note that x represents country codes.
7. Requires Windows XP or Windows 2000 w/SP4. It also requires ESS and Trusted Platform Module Co-proc. Power-On-Password is not supported.
8. Supported on Windows 2000 and Windows XP only.
9. Supported on Window 2000 and Windows XP only. The USB output ports do not support certain High Speed USB 2.0 devices such as cameras and memory keys.
10. Can be used to mount a Flat Panel Monitor such as the T54, T55, T56, T74, T85, T86.
11. To be used in the iLV300 Value Data/Video Projector (M/T 0038A03)
12. To be used in the iLC300 Conference Room Data/Video Projector (M/T 0039A03)
13. To be used in the iLM300 MicroPortable Data/Video Projector 0037-A03.
14. Will work as a wired Projector like the C400.
15. To be used in the M500 Projector.
16. To be used in the E400 Projector
17. To be used in the M400 Projector.
18. To be used in the C400 Projector.
19. To be used in the E500 Projector.



Lenovo Essential Memory Key
- 512MB

Add a **ThinkPlus** Service Plan – see back page

Key Lenovo SS&P Products

Highlights

- **New!** Lenovo USB/Analog Headset by Sennheiser
- Docking
- Projectors
- Monitors
- Carrying Cases
- Keyboards
- Mice
- Services
- ThinkVantage Technologies

Lenovo USB/Analog Headset by Sennheiser

Key Sales Points and Features

- **A great value** for the superior sound quality, weight and comfort it provides
- For **Internet voice conversations, music or voice** applications
- Offers port flexibility via **USB or Analog** connectivity to any notebook, desktop, CD/DVD or audio player. **Convenient** for when you need to use your systems existing analog or USB port for other devices such as a USB keyboard, memory key or external speakers

- **WW Part # 40Y8518**

In-line volume control/microphone mute switch

Adjustable, bendable and pivotable Noise Cancelling microphone

USB Adapter reveals 2 x 3.5mm plugs



Adjustable headband

Single-sided cable

Self-adjusting earbuds for maximum comfort

ThinkPad Dock II

Key Sales Points and Features

- Provides a **comprehensive desktop expansion solution**
- Includes the following ports: RJ-11 for modem, RJ-45 for 10/100/1000 (GB) Ethernet, 4 USB 2.0, serial, parallel, PS/2 keyboard, PS/2 mouse, FDD, monitor, DVI, line in, line out, optional cable lock slot
- Also offers **key lock security**, two additional PCMCIA card slots, one half-size PCI card slot, and an **Ultrabay Slot** for device expansion
- **Works with R50, T40, and X30 Series notebooks (except R50e/R51e)**
- **Part Number 67P899X**

Docking connector and reinforced metal hooks tightly secure the system

Ultrabay Slot supports storage and optical devices

Rear ports offer convenient cable management

PCI card slot and PC card slots

Support tray provides a comfortable typing angle

Eject button allows for quick release from all peripherals

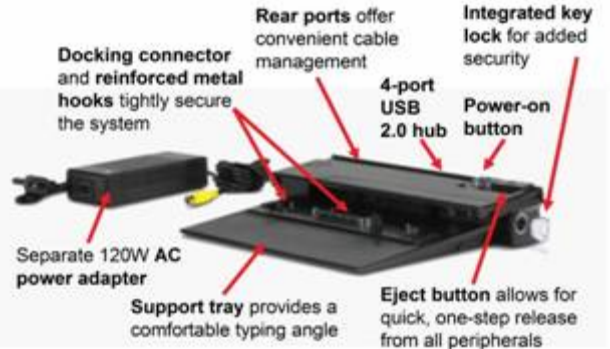
Power-on button

Integrated key lock for added security

ThinkPad Mini Dock

Key Sales Points and Features

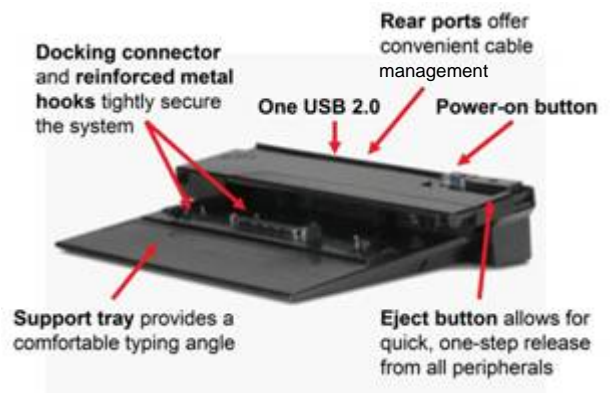
- Provides a mid-tier desktop expansion solution with **one-step, pass-through connection** from your ThinkPad to peripheral devices
- Includes the following ports: RJ-11 for modem, RJ-45 for 10/100/1000 (GB) Ethernet, 4 USB 2.0, serial, parallel, PS/2 keyboard, PS/2 mouse, FDD, monitor, DVI, line in, line out, optional cable lock slot
- Also offers **key lock security** and an external 120W AC power supply
- **Works with R50, T40, and X30 Series notebooks (except R50e/R51e)**
- **Part Number 67P89XX**



ThinkPad Port Replicator II

Key Sales Points and Features

- Provides an economical desktop expansion solution with one-step, pass-through connection from your ThinkPad to peripheral devices
- Includes the following ports: RJ-11 for modem, RJ-45 for 10/100/1000 (GB) Ethernet, one USB 2.0, serial, parallel, PS/2 keyboard, PS/2 mouse, FDD, monitor, DVI, line in, line out, optional cable lock slot
- Uses your ThinkPad's AC power adapter to charge your ThinkPad battery
- **Works with R50, T40, and X30 Series notebooks (except R50e/R51e)**
- **Part Number 74P6733**

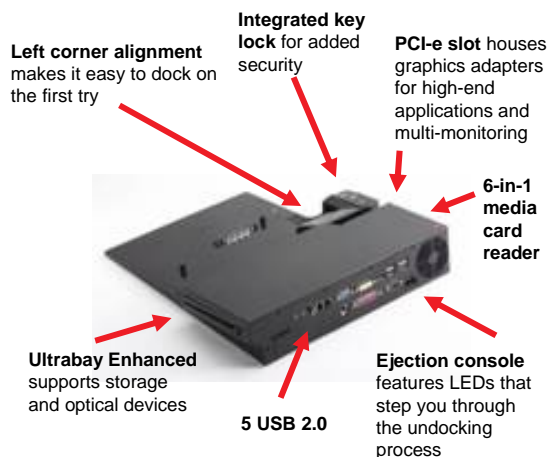


Recommend an additional 72W AC/DC Combo Adapter, 22P901x, for added convenience

ThinkPad Advanced Dock

Key Sales Points and Features

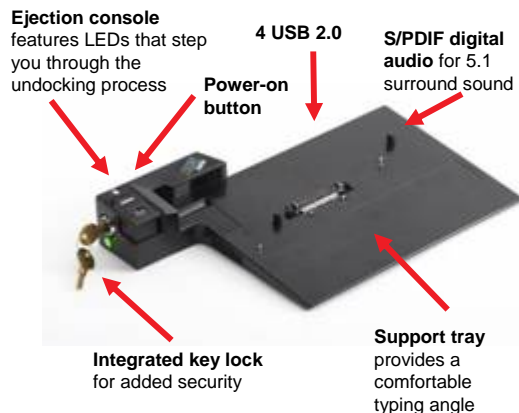
- Provides a **comprehensive desktop expansion solution** with enhanced multi-media functionality and the performance of PCI Express
- Includes the following ports: RJ-11 for modem, RJ-45 for GB Ethernet, **five USB 2.0**, serial, parallel, PS/2 for keyboard or mouse (accepts Y cable adapter), monitor, DVI-D, microphone in, headphone out, **S/PDIF** digital audio, optional cable lock slot
- Also offers **key lock security**, a **PCI-e card slot** for graphics cards, an **Ultrabay Enhanced drive bay** for device expansion, and a **6-in-1 media card reader**
- **Works with R60, T60, and Z60 Series notebooks**
- **Part Number 39T45xx**



ThinkPad Advanced Mini Dock

Key Sales Points and Features

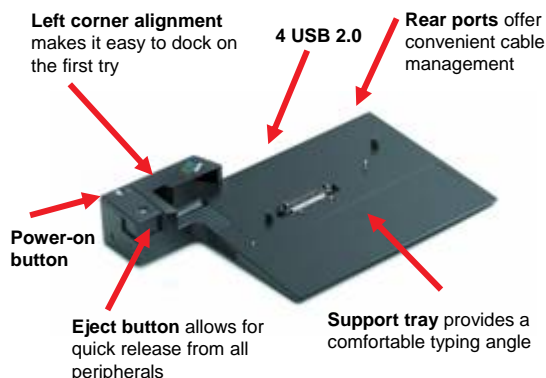
- Provides **enhanced cable management and connectivity** in a surprisingly small form factor
- Includes the following ports: RJ-11 for modem, RJ-45 for GB Ethernet, four USB 2.0, serial parallel, PS/2 for keyboard or mouse (accepts Y cable adapter), monitor, **DVI-D**, microphone in, headphone out, S/PDIF digital audio, optional cable lock slot
- Also offers **key lock security** and a **90W AC power supply**
- **Works with R60, T60, and Z60 Series notebooks**
- **Part Number 39T45yy**



ThinkPad Essential Port Replicator

Key Sales Points and Features

- Provides an **economical desktop expansion solution** with **one-step, pass-through connection** from your next generation ThinkPad to peripheral devices
- Includes the following ports: RJ-11 for modem, RJ-45 for GB Ethernet, 4 USB 2.0, PS/2 for mouse or keyboard (accepts Y cable adapter), monitor, optional cable lock slot
- Uses your ThinkPad's 90W AC power adapter to charge your battery
- **Works with R60, T60, and Z60 Series notebooks**
- **Part Number 250510W**

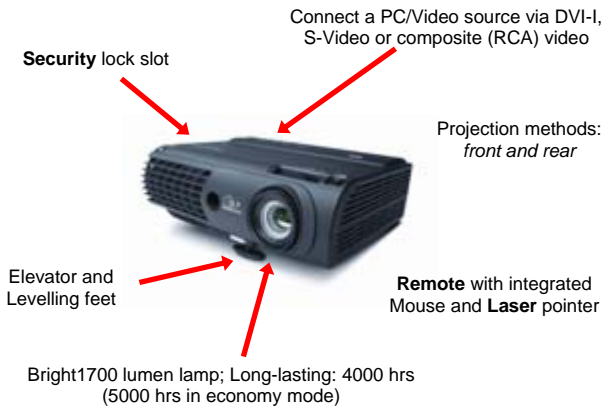


Recommend the 90W AC Adapter, 40Y76xx, for added convenience

Lenovo Projectors

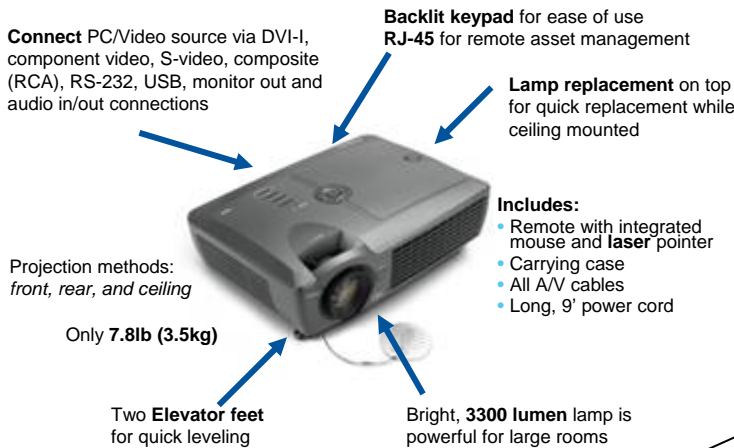
E500: Entry Conference

- A cost-effective tool for both business and entertainment needs
- Impress your audience at work or in the comfort of your home
- SVGA (800x600) image quality
- **Part Number 73P494x**
- Replacement Lamp P/N 73P4954



M500: Ultra Portable

- Extra-light, extra-small, micro-portable projector that's built with business travellers in mind – just 1.1kg
- Compelling appearance: New sleek design combined with superb XGA (1024x768) image quality
- Quick sync times: Just plug-in and project in any environment
- **Part Number 40Y78xx**
- Replacement Lamp P/N 40Y7872



C500: Full Conference

- Moves easily from boardroom to the conference room
- Ideal departmental solution or ceiling mounted for asset management
- Bright, feature-rich solution for large rooms
- **Part Number 0039A05**
- Replacement Lamp P/N 41U3045



C400 Wireless: Free Yourself

- 802.11b/g integrated wireless for connection-free projection
- USB Memory Key input – display images with no PC required
- Excellent XGA (1024x768) image quality
- **Part Number 40Y775X**
- Replacement Lamp P/N 73P3191

Monitors

ThinkVision and **Lenovo** monitors deliver unique performance & usability enhancements. They are the perfect choice for ThinkPad, ThinkCentre and Lenovo 3000 systems, as well as other popular industry-standard computers.



CRT MONITORS (All with black covers)

Description	Part Number
15" CRT	
E54 13.8-inch Viewable Image Size MPR-II	
17" CRT	
ThinkVision C170 (16.0-inch Viewable Image Size) TCO-99	
E74 (15.9-inch Viewable Image Size) MPR-II	
19" CRT	
ThinkVision C190 (18.0-inch Viewable Image Size) TCO-99	
Accessories	
ThinkPad Convertible Monitor Stand	
ThinkPad Monitor Stand	

FLAT PANEL LCD MONITORS (All with black covers)







Description	Interface, Standard features	Part Number
15" Screen		
Lenovo L151	Analog, Tilt Stand, TCO-99	
ThinkVision L151	Analog, Tilt Stand, TCO-99	
ThinkVision L151p	Analog/Digital, Lift-Tilt-Swivel-Pivot Stand, TCO-99	
17" Screen		
Lenovo L171 *	Analog, Tilt Stand, TCO-99	
ThinkVision L171	Analog, Tilt Stand, TCO-99	
ThinkVision L171p	Analog/Digital, Lift-Tilt-Swivel-Pivot Stand, TCO-99	
19" Screen		
Lenovo L191 *	Analog, Tilt Stand, TCO-99	
ThinkVision L192p	Analog/Digital, Lift-Tilt-Swivel-Pivot Stand, TCO-03	
20.1" Screen		
ThinkVision L201p	Analog/Digital, Lift-Tilt-Pivot Stand, TCO-99	
Accessories		
ThinkVision USB Soundbar	For L151, L151p, L171, L171p, L191, L192p, L201p	
TFT Radial Arm	For all LCD Monitors	
Monitor Stand	For all Monitors	
ThinkPad Convertible Monitor Stand	For all Monitors	
Kensington Microsaver Security Cable Lock	For all LCD Monitors	73P2582



Add a
ThinkPlus
Service
Plan – see
back page




* Carries Lenovo logo on bezel

ThinkPad Carrying Cases





Image	Model	Material	Dim. Weight	Capacity	Front Comp.	Rear Comp.	File Capacity	Notebook Protection	Features
	Fits all ThinkPads (A, T, R, X, and G models up to 15" screens)	Heavy Duty Nylon	3.25 lbs. (L) 16.5" (H) 14" (W) 5"	(L) 13.5" (H) 11" (W) 5"	(L) 15" (H) 11.25" (W) 2"	Slip Pocket	Letter, Legal, A4	SafePORT Air Cushion System	Adjustable, cushioned, elastic, non-slip shoulder strap. "Piggy back" strap for easy attachment to rolling travel cases. Front accessory and file sections. Limited lifetime warranty. Top Loading. <i>Value replacement for Targus part# OCN1 or TTL300</i>
	Fits all ThinkPads (A, T, R, X, and G models up to 15" screens)	Leather	3.5 lbs. (L) 16.5" (H) 14" (W) 5"	(L) 13.75" (H) 10.75" (W) 2.25"	(L) 15" (H) 11.25" (W) 2"	Slip Pocket	Letter, Legal, A4	SafePORT Air Cushion System	Adjustable, cushioned, elastic, non-slip shoulder strap. "Piggy back" strap for easy attachment to rolling travel cases. Front accessory and file sections. Comfort handles. Limited lifetime warranty. Top Loading. <i>Value replacement for Targus part# CLN5</i>
	Fits all ThinkPads (A, T, R, X, and G models up to 15" screens)	1680 D Ballistic Nylon	2.6 lbs. (L) 16.5" (H) 14.75" (W) 5.5"	(L) 14.25" (H) 11.75" (W) 2"	Zip Expansion compartment: (L) 13.24" (H) 12" (W) 2.25"	Zip Slip Pocket	Letter, Legal, A4	SafePORT Air Cushion System	Adjustable, padded non-slip shoulder strap. Trolley pocket for easy attachment to rolling travel cases. Zip expansion section for projector, second computer, printer or files. Removable cell phone pocket. Top Loading. <i>Value replacement for Targus part# CTM500</i>
	Fits all ThinkPads (A, T, R, X, and G models up to 15" screens)	1680 D Ballistic Nylon	2.8 lbs. (L) 15" (H) 19.25" (W) 9"	(L) 11.2" (H) 13" (W) 2.38"	Accessory/ file section in main compartment, second accessory section on front	Hidden back padded pocket for valuables	Letter, Legal, A4	SafePORT Air Cushion System	Divided, expandable file section, front storage compartment with business card holder, pen loops, accessory pockets, key clip and accessory pouch, removable mobile phone pocket, line out port hole for listening to player while traveling, comfort cushioned, adjustable shoulder straps. Top Loading. <i>Value replacement for Targus part# PR600</i>
	Specifically designed for T and X-series, can be adapted for R-series with adjustment of protection system	Smooth black leather exterior, blue suede interior lining	3.2 lbs. (L) 15.75" (H) 13.5" (W) 4.5"	(L) 12.25" (H) 10" (W) 1.25"	Separate accessory/ file section adjacent to main compartment	Zip slip pocket	Letter, Legal, A4	SafePORT Air Cushion System	Front storage section includes business card holder, pen loops, and a sleeve for your airline ticket and passport, removable accessory pouch, separate file section and a zippered pocket for additional storage. Top Loading. <i>IBM Exclusive</i>
	Specifically designed for X-series ThinkPad notebooks and can be used with 14" T-series notebooks	Smooth black leather exterior, blue interior lining	2.3 lbs. (L) 13.4" (H) 12.25" (W) 3.5"	(L) 12.2" (H) 10" (W) 1.0"	Accessory/ file section in main compartment, zip second essentials section on front	Back pocket for quick access items	Letter, Legal, A4	Memory Foam	An ultra portable, leather, executive case for an ultra portable notebook. Separate notebook and file sections in main area. Front zip and rear quick access pockets. Removable mobile phone pocket. Comfortable, cushioned, adjustable shoulder strap. Top Loading. <i>Limited lifetime warranty provided by Targus</i>
	Fits all ThinkPad notebooks (A, T, R, X, and G models up to 15" screens)	1680D Ballistic Nylon	4.1 lbs. (L) 15.75" (H) 13" (W) 6.25"	(L) 13" (H) 11.2" (W) 2.38"	Accessory Section: 14"x11.75" x1.25" and front zip slip pocket	File Section: 14"x11.75" x1" and rear zip slip pocket	Letter, Legal, A4	SafePORT Air Cushion System	Portable office on the go. File management and accessory sections, removable accessory pouch, hideaway side mesh pocket, removable mobile phone pocket, quick access pull for passport/ticket/id. Trolley sleeve. Top Loading. <i>Limited lifetime warranty provided by Targus</i>

Includes Limited Lifetime Warranty on all cases.

ThinkPlus Keyboards

US English P/N LA Spanish P/N Image Name	System connection	ThinkVantage™ Productivity Center System Function controls	Function keys	USB downstream ports	Re-program. hot keys	Internet Forward/ Back Buttons	Volume/Multimedia audio/video controls	Quick open media player button	Windows system keys	Windows shortcuts identified degrees of tilt	Detachable wrist rest	Number pad	Color	Key Home, Pg-Up, Pg-Down, Pg- Up, Pg-Down Layout	Pointing device	Operating system supported	Special features	
 73P4730 Preferred Pro USB Fingerprint	USB	Yes	No	12 Full Size	0	No	No	No	Yes	Yes	2	No	Yes	Business Black	2x3 block	No	Windows 2000 or XP	
 73P4067 Enhanced Performance Wireless Keyboard & Mouse	Wire- less via USB	Yes	No	12 Full Size	0	7	Yes	Yes	Yes	Yes	2	No	Yes	Business Black	2x3 block	Includes Wireless Mouse with rubberized coating	Windows 2000 or XP	Uses 2.4Ghz Wireless technology for 10+ Meter range for keyboard and mouse, rubberized wrist rest
 73P2620 Enhanced Performance USB Keyboard	USB	Yes	No	12 Full Size	2	7	Yes	Yes	Yes	Yes	3	Yes	Yes	Business Black	2x3 block	No	Windows 2000 or XP	Rubberized wrist rest
 31P8950 USB Keyboard with UltraNav	USB	Yes	Yes	12 3/4 Size	2	No	Yes	Vol Up/ Down Mute	No	No	2	No	Yes	Business Black	2x3 block above function keys	Trackpoint & UltraNav	Windows 2000 or XP	Same look and feel as ThinkPad
 31P9490 USB Travel Keyboard with UltraNav	USB	Yes	Yes	12 3/4 Size	2	No	Yes	Vol Up/ Down Mute	No	No	2	No	No	Business Black	2x3 block above function keys	Trackpoint & UltraNav	Windows 2000 or XP	Same look and feel as ThinkPad
 73P5220 Preferred Pro Fingerprint	USB	No	No	12 Full Size	0	No	No	No	Yes	No	3	Yes	Yes	Business Black	2x3 block above function keys	No	Windows 2000, Millennium, XP	
 31P7415 Preferred Pro Full Size PS/2 Keyboard	PS/2	No	No	12 Full Size	0	No	No	No	Yes	No	2	Yes	Yes	Business Black	2x3 block	No	DOS, Windows 95, 98, NT, 2000, Millennium, XP	
 31P7454 Preferred Pro Full Size PS/2 Keyboard	PS/2	No	No	12 Full Size	0	No	No	No	Yes	No	2	Yes	Yes	Pearl White	2x3 block	No	DOS, Windows 95, 98, NT, 2000, Millennium, XP	
 33L3225 Numeric Keypad USB	USB	N/A	N/A	N/A	N/A	N/A	N/A	N/A	N/A	Yes	N/A	N/A	Yes	Business Black	N/A	N/A	Windows 98, 2000, Millennium, XP	

ThinkPlus Mice

Part Number	System connection	Color	Type	Resolution (dots per inch of travel)	Control Buttons	Scrolling control	Vertical scrolling	Horizontal scrolling	Cable length	Ambidextrous	Ergonomic	Special features	Warranty	Replaced (previous part number)
31P8700  ScrollPoint Pro Mouse	USB & PS/2	Business Black	Optical	800	3	Blue Lite ScrollPoint	Yes	Yes	1.8m/5ft	No	Right Hand Users Only	ScrollPoint allows for horizontal as well as vertical scrolling	1 year CRU	33L3247
31P7405  Optical 3-Button ScrollPoint Mouse	USB & PS/2	Business Black	Optical	800	3	Blue Lite ScrollPoint	Yes	Yes	1.8m/5ft	Yes	No	ScrollPoint allows for horizontal as well as vertical scrolling	1 year CRU	33L3250
31P7410  Optical 3-Button Travel Wheel Mouse	USB & PS/2	Business Black	Optical	800	2	Red Lite Wheel	Yes	No	1.8m/5ft	Yes	No	Reduced power, Velcro strap for cord	1 year CRU	33L3248
06P4069  Optical Wheel Mouse	USB	Business Black	Optical	400	2	Wheel (red colored)	Yes	No	1.8m/5ft	Yes	No		1 year CRU	N/A

Lenovo Services

ThinkPlus and Lenovo Care Maintenance Services

- Convenient and inexpensive services that allow you to upgrade or enhance your original warranty
- IBM Global Services remains the preferred, authorized warranty service provider for Lenovo products
- For full details and part numbers go to: www.thinkpad.com/thinkplus/warranty
- ThinkPlus and Lenovo Care Activation:
 - www-1.ibm.com/services/thinkplus/ControllerServlet.wss
- International Service for Lenovo Notebooks (ThinkPads and Lenovo 3000)
 - International service is available who travel to countries where their Lenovo notebook products (as identified by the 4 digit machine type) is serviced by Lenovo or Lenovo Authorized representative. No registration is necessary
- Need Help? Contact Your Lenovo Sales Representative

Software Imaging Services

- Technologies, offered in the form of a **service** or **software-toolkit - "ImageUltra Builder for Lenovo Clients V 3.0"** that greatly simplifies the custom imaging process itself and all tasks associated with that process
- Service enables a stable custom image, over time, on ThinkPad & ThinkCentre systems. The Imaging Technology Center consults with customers and performs the service for the customer/BP
- **ImageUltra Builder for Lenovo Clients V3.0** Provides do-it-yourself, in-house ImageUltra capability for Lenovo clients. On Lenovo PC, a customer can take full advantage of ImageUltra's capabilities, including hardware independence. For more information go to: <http://www.lenovo.com/itc>

ThinkVantage On-Site Consulting Services

- Lenovo can provide a ThinkVantage Technologies specialist to help customers plan and deploy ThinkVantage Technologies ...provides a technically skilled expert to assist with deployment of TVT tools, provides an extension to the existing IT staff with a specialised skill, on site for a limited amount of time on a mutually agreed date without the need for a long term contractual commitment, to perform tasks within an agreed upon set of activities defined by a Statement of Work

Asset Tagging Services




- This service allows for a printed label, a.k.a. asset tag, to be affixed to the customer's PC
- The purpose of asset tagging is to provide a means for customers to track and manage their IT assets
- Asset tag information might include Machine Type Model (MTM), Serial Number, End of Lease (EOL) data, Identification Number - Bar Code, Customer Logo, MAC Address, etc.
- Standard and enhanced asset tags can be printed and affixed in manufacturing

Lenovo ThinkVantage Technologies Data Protection Solutions

ThinkVantage™ Technologies create a business advantage for your customers by helping them to reduce costs and increase data security. For more information, visit www.lenovo.com/thinkvantage.

<p>Rescue and Recovery (I) Helps end users get support and recover the operating system, applications and data – even when the primary operating system will not boot (works well with Lenovo hard drive options below)</p>	<p>Utimaco SafeGuard Easy The data on a PC is often more important to the company than the PC. Regulatory compliance usually includes dependencies on encryption to protect sensitive data. Full hard drive encryption is the best way to protect critical data. (works well with Rescue and Recovery, and Client Security Solutions)</p>	<p>Client Security Solution (S) Securely encrypts confidential data, protects passwords and supports secure system log-on through a passphrase and/or Lenovo fingerprint reader solution (works well with Lenovo Fingerprint Reader options below)</p>
----------------------------------------------------------------------------------------------------------------------------------------------------------------------------------------------------------------------------------------	------------------------------------------------------------------------------------------------------------------------------------------------------------------------------------------------------------------------------------------------------------------------------------------------------------------------------------------------------	-------------------------------------------------------------------------------------------------------------------------------------------------------------------------------------------------------------------------------------------------------------------



<p>Portable 40GB USB 2.0 Hard Drive with Rescue and Recovery™ Part Number 22P7196</p> <p>Portable 80GB USB 2.0 Hard Drive with Rescue and Recovery v3.0 Part Number 40Y8726</p> 	<p>Utimaco SafeGuard Easy, full hard drive encryption Part Number 40Y8484</p> <p>Utimaco SafeGuard Private Disk Enterprise Edition, File and Folder Encryption Part Number 73P4934</p> 	<p>Preferred Pro USB Fingerprint Keyboard Part Number 73P4730</p> <p>USB Fingerprint Reader Part Number 73P4774</p> 
-----------------------------------------------------------------------------------------------------------------------------------------------------------------------------------------------------------------------------------------------------------------------------	------------------------------------------------------------------------------------------------------------------------------------------------------------------------------------------------------------------------------------------------------------------------------------	------------------------------------------------------------------------------------------------------------------------------------------------------------------------------------------------------------------

I = Included on all ThinkPad notebooks and ThinkCentre desktops (download may be required)

S = Included on selected models (download may be required)

© 2006 Lenovo. Produced in the USA, 06-06. All rights reserved. **Availability:** All offers subject to availability. Lenovo reserves the right to alter product offerings and specifications at any time without notice. Lenovo is not responsible for photographic or typographic errors. **Warranty Information:** For a copy of applicable product warranties, write to: Warranty Information, P.O. Box 12195, RTP, NC 27709, Attn: Dept. ZPYA/B676. Lenovo makes no representation or warranty regarding third-party products or services. **Footnotes: Limited warranty:** Support unrelated to a warranty issue may be subject to additional charges. **International Warranty Service** is available for most models in any country in which this product is sold and serviced. Service delivery methods and parts availability vary by country, may be different from that in the country of purchase, and are subject to change without notice. Fees and restrictions may apply in some countries. **Mobile Processors:** Power management reduces processor speed when in battery mode. **Hard disk drive:** GB=1,000,000,000 bytes. Accessible capacity is less; up to 4GB is service partition. **Memory:** For PCs without a separate video card, memory supports both system and video. Accessible system memory is up to 64MB less than the amount stated, depending on video mode. **Maximum capacity:** may require the replacement of standard component with largest supported component available. **Wireless 11a, 11b and 11g wireless:** is based on IEEE 802.11a, 802.11b and 802.11g, respectively. An adapter with 11a/b, 11b/g or 11a/b/g can communicate on either/any or any of these listed formats respectively; the actual connection will be based on the access point to which it connects. **Battery:** These model numbers achieved Battery Runtime Time of at least the time shown during testing. A description of the testing is available at lenovo.com/pc/ww/thinkpad/batterylife. Battery life (and recharge times) will vary based on many factors including screen brightness, applications, features, power management, battery conditioning and other customer preferences. **Weight:** includes battery and standard optical drive; weight may vary due to vendor components, manufacturing process and options.

The following are trademarks of Lenovo: Lenovo and the Lenovo logo, Lenovo Care, ThinkVantage, ThinkCentre, ThinkPad. Windows is a registered trademark of Microsoft Corporation. Intel, Celeron, and Pentium are trademarks of Intel Corporation. Other company, product and service names may be trademarks or service marks of others.

Visit lenovo.com/safecomputing periodically for the latest information on safe and effective computing.